

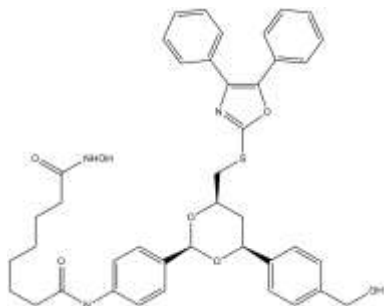
## Tubacin

**ALTERNATE NAME:** N-[4-[(2*R*,4*R*,6*S*)-4-[[[(4,5-Diphenyl-2-oxazolyl)thio]methyl]-6-[4-(hydroxymethyl)phenyl]-1,3-dioxan-2-yl]phenyl]-*N'*-hydroxyoctanediamide

**CATALOG #:** 1984-250, 1000

**AMOUNT:** 250 µg, 1 mg

**STRUCTURE:**



**MOLECULAR FORMULA:** C<sub>41</sub>H<sub>43</sub>N<sub>3</sub>O<sub>7</sub>S

**MOLECULAR WEIGHT:** 721.86

**CAS NUMBER:** 880090-88-0

**APPEARANCE:** Off-white solid

**SOLUBILITY:** DMSO (~10 mg/ml)

**PURITY:** ≥98% by HPLC

**STORAGE:** Store at -20 °C

**DESCRIPTION:** Tubacin (**Tubulin acetylation inducer**) is a highly potent, selective, reversible, and cell-permeable inhibitor of histone deacetylase 6 (HDAC6, IC<sub>50</sub> = 4 nM). Displays 1000-fold more selectivity for HDAC6 over other HDACs. It inhibits α-tubulin deacetylation in mammalian cells. Unlike trichostatin A (TSA), which is a broad spectrum HDAC inhibitor, tubacin is specific for the tubulin deacetylase activity of HDAC6. Tubacin causes increased acetylation of α-tubulin, accumulation of polyubiquitinated proteins, and apoptosis. It does not affect global histone deacetylation, gene-expression profiling, or cell cycle progression mediated α-tubulin deacetylation in mammalian cells.

**HANDLING:** Do not take internally. Wear gloves and mask when handling the product! Avoid contact by all modes of exposure.

**FOR RESEARCH USE ONLY! Not to be used on humans.**

**RELATED PRODUCTS:**

- Apicidin (**Cat. No. 1601-1**)
- CI-994 (**Cat. No. 1742-10, 50**)
- CUDC-101 (**Cat. No. 1966-5, 25**)
- DiscoveryPak™ HDAC Inhibitor Set (**Cat. No. K851-6**)
- M344 (**Cat. No. 1701-1**)
- MS-275 (Entinostat, MS-275) (**Cat. No. 1590-1,5**)
- Panobinostat (LBH589) (**Cat. No. 1612-1,5**)
- SAHA (**Cat. No. 1604-1**)
- Sodium 4-phenylbutyrate (**Cat. No. 1608-100,1000**)
- Sodium Butyrate (**Cat. No. 1609-1000**)
- Splitomycin (**Cat. No. 1610-5**)
- Trichostatin A (**Cat. No. 1606-1**)
- Tubastatin A (**Cat. No. 1724-1, 5**)
- Valproic Acid, Sodium Salt (**Cat. No. 1647-200**)