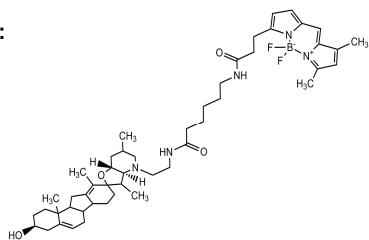


BODIPY-Cyclopamine

CATALOG #: 2160-50, 250

AMOUNT: 50 µg, 250 µg

STRUCTURE:



MOLECULAR FORMULA: C₄₉H₇₀BF₂N₅O₄

MOLECULAR WEIGHT: 841.92

CAS NUMBER: 334658-24-1

APPEARANCE: Red solid

SOLUBILITY: DMSO

PURITY: ≥95% by TLC

STORAGE: Store at -20°C. Protect from light and moisture

DESCRIPTION: A fluorescent Cyclopamine (Cat. No. 1578-5) derivative that retains potency in Shh signaling inhibition (IC₅₀ = 150 nM).

REFERENCE: Chen, J.K., *et al.* (2002). *Genes Dev.* **16**, 2743-2748.

HANDLING: Do not take internally. Wear gloves and mask when handling the product! Avoid contact by all modes of exposure.

RELATED PRODUCTS:

Cyclopamine (Cat. No. 1578-5)

Cyclopamine-KAAD (Cat. No. 1910-50)

GANT58 (Cat. No. 1812-5, 25)

GANT61 (Cat. No. 1892-5)

GDC-0449 (Cat. No. 1890-5, 25)

Hh Signaling Pathway Antagonist (Cat. No. 1659-1)

DiscoveryPak™ hedgehog Signaling Pathway Antagonists Set (Cat. No. K868-6)

Itraconazole (Cat. No. 1987-50, 100, 500, 1000)

JK-184 (Cat. No. 1726-1)

Purmorphamine (Cat. No. 1672-5)

Robotnikinin (Cat. No. 1923-1)

SANT-1 (Cat. No. 1978-1,5)

SANT-2 (Cat. No. 1976-1, 5)

Smo Antagonist, SA1 (Cat. No. 2154)

Smo Antagonist, SA9 (Cat. No. 2155)

Smo Antagonist, SA10 (Cat. No. 2159)

Sonic Hedgehog, human recombinant (Cat. No. 4010-25, 100, 1000)

Sonic Hedgehog, murine recombinant (Cat. No. 4020-25, 100, 1000)

Tomatidine hydrochloride (Cat. No. 1893-25)

FOR RESEARCH USE ONLY! Not to be used in humans.