

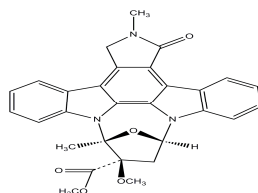
KT5823

ALTERNATE NAME: 2,3,9,10,11,12-hexahydro-10R-methoxy-2,9-dimethyl-1-oxo-9S,12R-epoxy-1H-diindolo[1,2,3-fg:3',2',1'-kl]pyrrolo[3,4-ij][1.]benzodiazocine-10-carboxylic acid, methyl ester

CATALOG #: 2164-50, 250

AMOUNT: 50 µg, 250 µg

STRUCTURE:



MOLECULAR FORMULA: C₂₉H₂₅N₃O₅

MOLECULAR WEIGHT: 495.53

CAS NUMBER: 126643-37-6

APPEARANCE: White solid

SOLUBILITY: DMSO (20 mg/ml)

PURITY: ≥98% by HPLC

STORAGE: Store at -20°C. Protect from air and light

DESCRIPTION: Cell-permeable. KT5823 is a derivative of K-252a (Cat. No. 2013) that acts as a selective inhibitor of Protein kinase G (PKG) (K_i = 0.234 µM). Inhibits other kinases at much higher concentrations (K_i's for PKA = 4 µM and for MLCK=>10 µM).

HANDLING: Do not take internally. Wear gloves and mask when handling the product! Avoid contact by all modes of exposure.

RELATED PRODUCTS:

Bisindolylmaleimide I (Cat. No. 1945-1, 5)
Bisindolylmaleimide I hydrochloride (Cat. No. 1947-1, 5)
Chelerythrine chloride (Cat. No. 2064-5)
Enzastaurin (Cat. No. 1619-1, 5)
Fasudil Mono HCl (Cat. No. 1787-10, 50)
Go6976 (Cat. No. 1711-500)
EZSolution™ Go6976 (Cat. No. 1785-500)
H-89 DiHCl (Cat. No. 1768-1, 5)
K252a (Cat. No. 2013-500, 1000)
KN-93, Water-Soluble (Cat. No. 1909-1, 5)
LY-333,531 hydrochloride (Cat. No. 2156-250, 1000)
PKC412 (Cat. No. 2052-1,5)
Ro 31-8220 methanesulfonate (Cat. No. 1946-1, 5)
Staurosporine (Cat. No. 1048-01, 1)
EZSolution™ Staurosporine (Cat. No. 1745-01)
Stauprimide (Cat. No. 1743-500)
Tamoxifen citrate (Cat. No. 1551-1000)

FOR RESEARCH USE ONLY! Not to be used in humans.