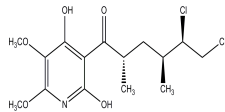


PRODUCT: Atpenin A5 (Synthetic)**ALTERNATE NAME:** 3-[(2S,4S,5R)-5,6-Dichloro-2,4-dimethyl-1-oxohexyl]-4-hydroxy-5,6-dimethoxy-2(1H)-pyridinone**CATALOG #:** 2210-250, 1000**AMOUNT:** 250 µg, 1 mg**STRUCTURE:****MOLECULAR FORMULA:** C₁₅H₂₁Cl₂NO₅**MOLECULAR WEIGHT:** 366.24**CAS NUMBER:** 119509-24-9**APPEARANCE:** White to off-white solid**SOLUBILITY:** DMSO**PURITY:** ≥95% by HPLC**STORAGE:** Store at -20 °C. Protect from light and moisture**DESCRIPTION:** Synthetic. Originally isolated from *Penicillium sp.* strain. An antibiotic and antifungal agent. Potent and specific mitochondrial complex II (succinate-ubiquinone oxidoreductase) inhibitor and mitochondrial ATP-sensitive potassium (mK(ATP)) channel activator. Modulates mitochondrial ROS generation during cardioprotection.**HANDLING:** Do not take internally. Wear gloves and mask when handling the product! Avoid contact by all modes of exposure.**RELATED PRODUCTS:**Mitochondrial DNA Isolation Kit (**Cat. No. K208-50**)Decylubiquinone (**Cat. No. 2099-1, 10**)JC-1 (**Cat. No.1130-5**)Phenformin hydrochloride (**Cat. No. 1899-100, 1000**)Rottlerin (**Cat. No. 1827-10**)**USAGE:** **FOR RESEARCH CH USE ONLY! Not to be used in humans**