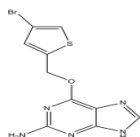


**PRODUCT: Lomeguatrib****ALTERNATE NAME:** PaTrin-2; 6-[(4-bromo-2-thienyl)methoxy]-9H-purin-2-amine**CATALOG #:** 2224-5, 25**AMOUNT:** 5 mg, 25 mg**STRUCTURE:****MOLECULAR FORMULA:** C<sub>10</sub>H<sub>8</sub>BrN<sub>5</sub>OS**MOLECULAR WEIGHT:** 326.17**CAS NUMBER:** 192441-08-0**APPEARANCE:** Off-white solid**SOLUBILITY:** DMSO (100 mM)**PURITY:** ≥98% by HPLC**STORAGE:** At -20°C. Protect from air and moisture**DESCRIPTION:** A potent inhibitor of DNA repair protein O<sup>6</sup>-Methylguanine-DNA methyltransferase (MGMT) and related mammalian proteins. PaTrin-2 displays nanomolar activity in vitro and in vivo.**REFERENCE:** Barvaux, V.A., *et al.* (2004). *Mol. Cancer Ther.* **3**, 1215-1220.**HANDLING:** Do not take internally. Wear gloves and mask when handling the product! Avoid contact by all modes of exposure.**RELATED PRODUCTS:**

AMI-1 (Cat. No. 1943-5, 25)

Aza-2'-deoxycytidine (Cat. No. 1754-10, 50)

5- BIX01294 (Cat. No. 1678-5, 25)

Bromodomain Inhibitor, (+)-JQ1 (Cat. No. 2070-1, 5)

EZSolution™ (+)-JQ1 (Cat. No. 2091-1)

3-Deazaneplanocin (Cat. No. 2060-250, 1000)

RG108 (Cat. No. 1679-10, 30)

UNC0638 (Cat. No. 1933-1, 5)

**USAGE:** **FOR RESEARCH CH USE ONLY! Not to be used in humans**