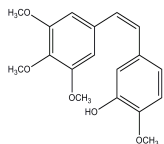


PRODUCT: Combretastatin A4**ALTERNATE NAME:** 2-Methoxy-5-[(1Z)-2-(3,4,5-trimethoxyphenyl)ethenyl]phenol; CRC 87-09, NSC 817373**CATALOG #:** 2239-10, 50**AMOUNT:** 10 mg, 50 mg**STRUCTURE:****MOLECULAR FORMULA:** C₁₈H₂₀O₅**MOLECULAR WEIGHT:** 316.35**CAS NUMBER:** 117048-59-6**APPEARANCE:** White to off-white solid**SOLUBILITY:** DMSO (100 mM) or EtOH (100 mM)**PURITY:** ≥98% by HPLC**STORAGE:** At -20°C. Protect from light and moisture**DESCRIPTION:** A vascular disrupting, antineoplastic and microtubule-depolymerizing agent. Binds to tubulin dimers and prevents microtubule polymerization, resulting in mitotic arrest and apoptosis in endothelial cells. In addition, it disrupts the engagement of the endothelial cell-specific junctional molecule vascular endothelial-cadherin (VE-cadherin) and thus the activity of the VE-cadherin/β-catenin/Akt signaling pathway, which may result in the inhibition of endothelial cell migration and capillary tube formation.**REFERENCE:** Lin, H.L., *et al.* (2007). *J. Pharmacol. Exp. Ther.* **323**, 365-373**HANDLING:** Do not take internally. Wear gloves and mask when handling the product! Avoid contact by all modes of exposure.**RELATED PRODUCTS:**

Betulinic Acid (Cat. No. 1552-25)
Bexarotene (Cat. No. 1575-5, 50)
Capecitabine (Cat. No. 1741-100, 1000)
Carboplatin (Cat. No. 1553-100)
Cisplatin (Cat. No. 1550-100, 1000)
Colchicine (Cat. No. 1519-1000)
Daunorubicin.HCl (1524-10, 50, 500)
Docetaxel (Cat. No. 2232-10, 50)
Doxorubicin HCl (Cat. No. 1527-5)
(-)-Epigallocatechin gallate (Cat. No. 1841-50)
Epothilone B (Cat. No. 2012-1, 5)
Fludarabine Phosphate (Cat. No. 1763-10, 50)
Gemcitabine Hydrochloride (Cat. No. 1759-25, 100)
Genistein (Cat. No. 1533-10)
Ilimaquinone (Cat. No. 2038-100)
Nedaplatin (Cat. No. 1576-5)
Nocodazole (Cat. No. 2185-10, 50)
Oxaliplatin (Cat. No. 1577-25)
Piperlongumine (Cat. No. 1919-10, 50)
Paclitaxel (Cat. No. 1567-25)
Tamoxifen Citrate (Cat. No. 1551-1000)
Vinorelbine Tartrate (Cat. No. 1957-5, 25)

USAGE: **FOR RESEARCH CH USE ONLY! Not to be used in humans**