

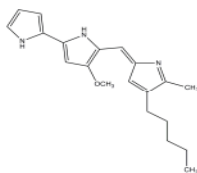
PRODUCT: Prodigiosin

ALTERNATE NAME: 4-methoxy-5-[(Z)-(5-methyl-4-pentyl-2H-pyrrol-2-ylidene)methyl]-1H,1'H-2,2'-bipyrrole; NSC 47147; BRN 4526727

CATALOG #: 2311-250, 1000

AMOUNT: 250 µg, 1 mg

STRUCTURE:



MOLECULAR FORMULA: C₂₀H₂₅N₃O

MOLECULAR WEIGHT: 323.43

CAS NUMBER: 82-89-3

APPEARANCE: Dark red solid

SOLUBILITY: DMSO or Ethanol

PURITY: ≥95% by HPLC

STORAGE: At -20° C. Protect from air and light

DESCRIPTION: Isolated from *Serratia marcescens*. Displays antibacterial, anticancer, cytotoxic, immunosuppressive, and antiproliferative activities. Prodigiosin induces apoptosis in hematopoietic cancer cells and cells derived from other human cancers, including gastric and colon with no marked toxicity in nonmalignant cell lines. Also acts as a mTORC1 and mTORC2 complex inhibitor.

REFERENCES: Espona-Fiedler, M., *et al.* (2012). *Biochem. Pharmacol.* **83**, 489-496.

HANDLING: Do not take internally. Wear gloves and mask when handling the product! Avoid contact by all modes of exposure.

RELATED PRODUCTS:

BEZ235 (NVP-BEZ235) (Cat. No. 1626-5, 25)

BI-D1870 (Cat. No. 1824-1, 5)

Deforolimus (Cat. No. 1587-5, 25)

DiscoveryPak™ PI 3-Kinase Inhibitor Panel (Cat. No. K856-5)

Everolimus (Cat. No. 1917-5, 25)

GDC-0941 (Cat. No. 1623-1,5)

GSK-2126458 (Cat. No. 1961-1, 5)

IC87114 (Cat. No. 1661-1)

LY 294002 (Cat. No. 1667-5, 25)

mTOR Inhibitor, Ku-0063794 (Cat. No. 1779-1,5)

mTOR Inhibitor, WYE-28 (Cat. No. 2255-500, 1000)

mTOR Inhibitor, WYE-132 (Cat. No. 2256-500, 1000)

mTOR Inhibitor, WYE-23 (Cat. No. 2257-500, 1000)

PI-103 (Cat. No. 1728-1,5)

PI3-Ky Inhibitor, AS-605240 (Cat. No. 1780-1,5)

PathwayReady™ PI3-K/Akt/mTOR Signaling Inhibitor panel (Cat. No. K857-11)

PP242 (Cat. No. 1658-1)

PX-866 (Cat. No. 1965-1,5)

Rapamycin (Cat. No. 1568-5, 50)

EZSolution™ Rapamycin (Cat. No. 1746-5)

Temsirolimus (Cat. No. 1600-5, 25)

TGX-115 (Cat. No. 1660-1)

TGX-221 (Cat. No. 1781-1,5)

Torin 1 (Cat. No. 2273-5, 25)

Torin 2 (Cat. No. 2274-5, 25)

Wortmannin (Cat. No. 1670-1)

USAGE: **FOR RESEARCH CH USE ONLY! Not to be used in humans**