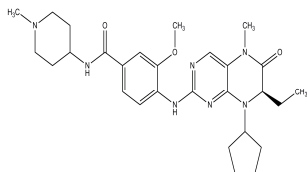


PRODUCT: BI-2536

ALTERNATE NAME: (R)-4-(8-cyclopentyl-7-ethyl-5-methyl-6-oxo-5,6,7,8-tetrahydropteridin-2-ylamino)-3-methoxy-N-(1-methylpiperidin-4-yl)benzamide

CATALOG #: 2370-5, 25

AMOUNT:



STRUCTURE:

MOLECULAR FORMULA: C₂₈H₃₉N₇O₃

MOLECULAR WEIGHT: 521.65

CAS NUMBER: 755038-02-9

APPEARANCE: Crystalline solid

SOLUBILITY: DMSO (~20 mg/ml) or Ethanol (~ 100 mg/ml)

PURITY: ≥98% by HPLC

STORAGE: At -20°C. Protect from light and moisture

DESCRIPTION: BI-2536 is a potent, selective inhibitor of polo-like kinase 1 (PLK1) (IC₅₀ = 0.83 nM). It blocks the activities of Plk2 and Plk3 to a slightly lesser extent with IC₅₀ of 3.5 nM and 9.0 nM, respectively. BI-2536 potently causes a mitotic arrest and induces apoptosis in human cancer cell lines of diverse tissue origin.

REFERENCE: Grinshtein, N., *et al.* (2011). *Cancer Res.* **71**, 1385-1395; Steegmaier, M., *et al.* (2007). *Curr. Biol.* **4**, 316-322.

HANDLING: Do not take internally. Wear gloves and mask when handling the product! Avoid contact by all modes of exposure.

RELATED PRODUCTS:

BI 6727 (Cat. No. 2222-1, 5)
GSK461364 (Cat. No. 2287-5, 25)
Wortmannin (Cat. No. 1670-1)

USAGE: **FOR RESEARCH CH USE ONLY! Not to be used in humans**