

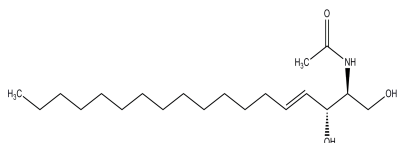
PRODUCT: C2 Ceramide

ALTERNATIVE NAME: N-Acetyl-D-erythro-sphingosine

CATALOG #: 2390-5, 25

AMOUNT: 5 mg, 25 mg

STRUCTURE:

MOLECULAR FORMULA: C₂₀H₃₉NO₃

MOLECULAR WEIGHT: 341.54

CAS NUMBER: 3102-57-6

APPEARANCE: White solid

SOLUBILITY: DMSO (~50 mg/ml) or EtOH (~ 25 mg/ml)

PURITY: ≥98% by TLC

STORAGE: At -20°C. Protect from light and air

DESCRIPTION: A cell-permeable ceramide analog. Induces apoptosis in a variety of cell types. Stimulates ceramide-activated protein phosphatases and activates ceramide-activated protein kinases.

REFERENCE: Bielawaska, A., *et al.* (1992). *J. Biol. Chem.* **267**, 18493-18497.

HANDLING: Do not take internally. Wear gloves and mask when handling the product! Avoid contact by all modes of exposure.

RELATED PRODUCTS:

C2-Dihydroceramide (Cat. No. 2391-5, 25)

Sphingosine Kinase Inhibitor, SKI-I (Cat. No. 2046-5, 25)

Sphingosine Kinase Inhibitor, SKI-II (Cat. No. 2047-5, 25)

Sphingosine Kinase 1 Antibody (Cat. No. 3883-100)

Sphingosine Kinase 2 Antibody (Cat. No. 3884-100)

PhosphoSeek™ Sphingosine Kinase Assay kit (Cat. No. K708-400)

USAGE: **FOR RESEARCH CH USE ONLY! Not to be used in humans**