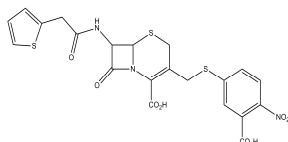


**PRODUCT: CENTA  $\beta$ -lactamase substrate****RELATED PRODUCTS:**

Nitrocefin (Cat. No. 2388-5, 25)

**ALTERNATE NAME:** (6R,7R)-3-[(3-carboxy-4-nitrophenyl)sulfanylmethyl]-8-oxo-7-[(2-thiophen-2-ylacetyl)amino]-5-thia-1-azabicyclo[4.2.0]oct-2-ene-2-carboxylic acid**CATALOG #:** 2394-10, 50**AMOUNT:** 10 mg, 50 mg**STRUCTURE:****MOLECULAR FORMULA:** C<sub>21</sub>H<sub>17</sub>N<sub>3</sub>O<sub>8</sub>S<sub>3</sub>**MOLECULAR WEIGHT:** 535.57**CAS NUMBER:** 9073-60-3**APPEARANCE:** Yellow solid**SOLUBILITY:** Phosphate buffer (25 mM) or MeOH**PURITY:**  $\geq$ 98% by TLC**STORAGE:** At -20°C. Protect from light and air**DESCRIPTION:** CENTA is a chromogenic  $\beta$ -lactamase substrate that is readily hydrolyzed by  $\beta$ -lactamases of all classes except for the *Aeromonas hydrophila* metalloenzyme. Useful for kinetic studies involving  $\beta$ -lactamases.**REFERENCE:** Bebrone, C., *et al.* (2001). *Antimicrob. Agents Chemother.* **45**, 1868-1871.**HANDLING:** Do not take internally. Wear gloves and mask when handling the product! Avoid contact by all modes of exposure.**USAGE:** **FOR RESEARCH CH USE ONLY! Not to be used in humans**