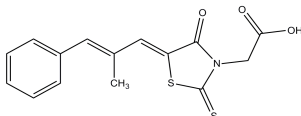


PRODUCT: Epalrestat**ALTERNATE NAME:** 2-[(5Z)-5-[(E)-3-phenyl-2-methylprop-2-enylidene]-4-oxo-2-thioxo-3-thiazolidinyl]acetic acid**CATALOG #:** 2397-5, 25**AMOUNT:** 5 mg, 25 mg**STRUCTURE:****MOLECULAR FORMULA:** C₁₅H₁₃NO₃S₂**MOLECULAR WEIGHT:** 319.40**CAS NUMBER:** 82159-09-9**APPEARANCE:** Yellow solid**SOLUBILITY:** DMSO (~5 mg/ml)**PURITY:** ≥98% by TLC**STORAGE:** At -20° C. Protect from light and air**DESCRIPTION:** Epalrestat is an aldose reductase inhibitor (IC₅₀ = 10 nM (rat lens) and 25 nM (human placenta). It reduces sorbitol accumulation in the sciatic nerve, erythrocytes and ocular tissue. May be used to prevent or slow the progression of diabetic neuropathy.**REFERENCE:** Ramirez, M.A., and Borja, N.L. (2008). *Pharmacotherapy* **28**, 646-655.**HANDLING:** Do not take internally. Wear gloves and mask when handling the product! Avoid contact by all modes of exposure.**RELATED PRODUCTS:**Glucose Colorimetric/Fluorometric Assay Kit (Cat. No. **K606-100**)Glucose Colorimetric Assay Kit II (Cat. No. **K686-100**)D-Sorbitol Colorimetric Assay Kit (Cat. No. **K631-100**)**USAGE:** **FOR RESEARCH CH USE ONLY! Not to be used in humans**