

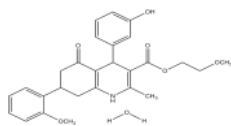
PRODUCT: HPI-1

ALTERNATE NAME: 2-Methoxyethyl 1,4,5,6,7,8-hexahydro-4-(3-hydroxyphenyl)-7-(2-methoxyphenyl)-2-methyl-5-oxo-3-quinolinecarboxylate

CATALOG #: 2410-5, 25

AMOUNT: 5 mg, 25 mg

STRUCTURE:



MOLECULAR FORMULA: C₂₇H₂₉NO₆ · XH₂O

MOLECULAR WEIGHT: 463.52 (anhydrous)

CAS NUMBER: 599150-20-6

APPEARANCE: Yellow solid

SOLUBILITY: DMSO (~25 mg/ml) or EtOH (~25 mg/ml)

PURITY: ≥98% by TLC

STORAGE: At -20° C. Protect from light and air

DESCRIPTION: HPI-1 is a Hedgehog pathway inhibitor acting downstream of Smo and independently of PKA, PI3K and MAPK. It can suppress Hh pathway activation induced by loss of Su(fu) or Gli overexpression. Inhibits both endogenous and exogenous Gli1/Gli2 activity. IC₅₀'s range from 0.2 to 6 μM for various cell-based assays.

REFERENCE: Hyman, J.M., *et al.* (2009). *Proc. Natl. Acad. Sci. USA* **106**, 14132-14137

HANDLING: Do not take internally. Wear gloves and mask when handling the product! Avoid contact by all modes of exposure.

RELATED PRODUCTS:

- BODIPY-Cyclopamine (Cat. No. 2160-50, 250)
- Cyclopamine (Cat. No. 1578-5)
- Cyclopamine-KAAD (Cat. No. 1910-50)
- GANT58 (Cat. No. 1812-5, 25)
- GANT61 (Cat. No. 1892-5)
- GDC-0449 (Cat. No. 1890-5, 25)
- Hh Signaling Pathway Antagonist (Cat. No. 1659-1)
- DiscoveryPak™ hedgehog Signaling Pathway Antagonists Set (Cat. No. K868-6)
- Itraconazole (Cat. No. 1987-50, 100, 500, 1000)
- Jervine (Cat. No. 2357-1, 5)
- JK-184 (Cat. No. 1726-1)
- Purmorphamine (Cat. No. 1672-5)
- Robotnikinin (Cat. No. 1923-1)
- SANT-1 (Cat. No. 1978-1,5)
- SANT-2 (Cat. No. 1976-1, 5)
- Smo Antagonist, SA1 (Cat. No. 2154)
- Smo Antagonist, SA9 (Cat. No. 2155)
- Smo Antagonist, SA10 (Cat. No. 2159)
- Sonic Hedgehog, human recombinant (Cat. No. 4010-25, 100, 1000)
- Sonic Hedgehog, murine recombinant (Cat. No. 4020-25, 100, 1000)
- Tomatidine hydrochloride (Cat. No. 1893-25)

USAGE: *FOR RESEARCH CH USE ONLY! Not to be used in humans*