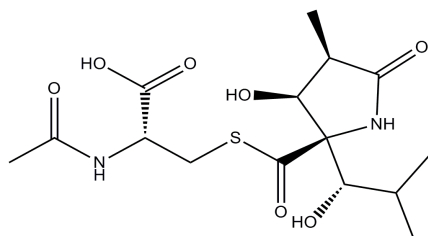


**PRODUCT: Lactacystin (Natural)****ALTERNATE NAME:****CATALOG #:** 2434-200**AMOUNT:** 200 µg**STRUCTURE:****MOLECULAR FORMULA:** C<sub>15</sub>H<sub>24</sub>N<sub>2</sub>O<sub>7</sub>S**MOLECULAR WEIGHT:** 376.42**CAS** 133343-34-7**APPEARANCE:** White solid**Solubility:** DMSO (20 mg/ml) or water (5 mg/ml)**PURITY:** ≥98% by HPLC**STORAGE:** Store at -20°C.**DESCRIPTION:**

Cell-permeable. Isolated from *Streptomyces lactacystiniaeus* strain OM-6519. A potent and selective inhibitor of the 20 S proteasome. Binds irreversibly to the active site N-terminal threonine residue of the catalytic β-subunit of the 20S proteasome, thereby inhibiting its chymotrypsin and trypsin-like activities. Induces neurite outgrowth in Neuro 2A neuroblastoma cells and has been reported to induce apoptosis in human monoblast U937 cells. Also inhibits NF-κB activation (IC<sub>50</sub> = 10 µM).

**REFERENCES:**Fenteany, G., *et al.* (1995). *Science* **268**, 726-731.**HANDLING:**

Do not take internally. Wear gloves and mask when handling the product! Avoid contact by all modes of exposure.

**RELATED PRODUCTS:**

Aclacinomycin A (Cat. No. 2032-5, 25)

Calpain Inhibitor I, ALLN (Cat. No. 1834-5, 25)

Calpain Inhibitor II, ALLM (Cat. No. 1834-5, 25)

Clasto-Lactacystin β-Lactone (Cat. No. 1710-100)

Carfilzomib (Cat. No. 2385-5, 25)

CEP-18770 (Cat. No. 2433-5, 25)

E6AP Antibody (Cat. No. 3744-100)

(-)-Epigallocatechin gallate (Cat. No. 1841-50)

Fenbendazole (Cat. No. 2157-100, 500)

Isopeptidase T (short form), human recombinant (Cat. No. 4861-25)

Isopeptidase T (long form), human recombinant (Cat. No. 4862-25)

Lactacystin (Cat. No. 1709-200)

MG-115 (Cat. No. 1831-1, 5)

EZSolution™ MG-115 (Cat. No. 2144-1)

MG-132 (Cat. No. 1703-5, 25)

Oprozomib (Cat. No. 2386-5, 25)

PS-341 (Cat. No. 1846-1,5)

EZSolution™ MG-132 (Cat. No. 1791-5)

Proteasome Activity Assay Kit (Cat. No. K245-100)

Proteasome Substrate, Fluorogenic (Cat. No. 1832-1, 5)

PYR-41 (Cat. No. 1925-5, 25)

PS-341 (Cat. No. 1846-1, 5)

EZSolution™ PS-341 (Cat. No. 2145-1)

Suc-Leu-Leu-Val-Tyr-AMC (Cat. No. 1833-5)

**USAGE:****FOR RESEARCH USE ONLY! Not to be used in humans.**