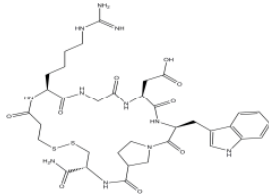


**PRODUCT: Eptifibatide**

**ALTERNATE NAME:** Integrelin; Integrilin; Intrifiban; [Mpa-Har-Gly-Asp-Trp-Pro-Cys]-NH<sub>2</sub>

**CATALOG #:** 2439-1

**AMOUNT:** 1 mg

**STRUCTURE:**

**MOLECULAR FORMULA:** C<sub>35</sub>H<sub>49</sub>N<sub>11</sub>O<sub>9</sub>S<sub>2</sub>

**MOLECULAR WEIGHT:** 831.96

**CAS No.** 188627-80-7

**APPEARANCE:** White solid

**Solubility:** H<sub>2</sub>O (~ 5 mg/ml)

**PURITY:** ≥98%

**STORAGE:** Store at -20°C. Protect from air and moisture

**DESCRIPTION:** A glycoprotein (GP) IIa/IIIb inhibitor. Eptifibatide inhibits platelet aggregation by reversibly binding to the platelet receptor glycoprotein (GP) IIb/IIIa of human platelets, thus preventing the binding of fibrinogen, von Willebrand factor, and other adhesive ligands. Inhibition of platelet aggregation occurs in a dose- and concentration-dependent manner.

**REFERENCES:** O'Shea, J.C. and Tchong, J.E. (2002). *Expert Opin. Pharmacother.* **3**, 1199-1210.

**HANDLING:** Do not take internally. Wear gloves and mask when handling the product! Avoid contact by all modes of exposure.

**RELATED PRODUCTS:**

GPVI Antibody (**Cat. No. 3818-100**)

GPVI Blocking Peptide (**Cat. No. 3818BP-50**)

Platelet Factor IV, Human Platelet (**Cat. No. 4099-20, 100**)

**USAGE:** **FOR RESEARCH USE ONLY! Not to be used in humans.**