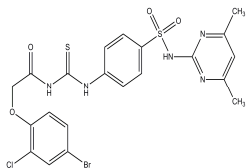


PRODUCT: ZCL278**ALTERNATE NAME:** 2-(4-Bromo-2-chlorophenoxy)-N-[[[4-[[[4,6-dimethyl-2-pyrimidinyl]amino]sulfonyl]phenyl]amino]thioxomethyl]acetamide**CATALOG #:** 2466-5, 25**AMOUNT:** 5 mg, 25 mg**STRUCTURE:****MOLECULAR FORMULA:** C₂₁H₁₉BrClN₅O₄S₂**MOLECULAR WEIGHT:** 584.89**CAS No.** 587841-73-4**APPEARANCE:** Yellow solid**SOLUBILITY:** DMSO (>50 mg/ml)**PURITY:** >98% by HPLC**STORAGE:** Store at -20°C. Protect from air and light**DESCRIPTION:** Cell-permeable. A selective Cdc42 GTPase inhibitor. It specifically targets Cdc42-ITSN interaction and inhibits Cdc42-mediated cellular processes; could be a valuable tool to explore Cdc42's involvement in cell motility and other actin-based cellular functions.**REFERENCES:** Friesland, A., *et al.* (2013). *Proc. Natl. Acad. Sci. USA* **110**, 1261-1266.**HANDLING:** Do not take internally. Wear gloves and mask when handling the product! Avoid contact by all modes of exposure.**RELATED PRODUCTS:**

ML141 (Cat. No. 2267-5, 25)

MLS-573151 (Cat. No. 1929-5, 25)

FOR RESEARCH USE ONLY! Not to be used in humans.