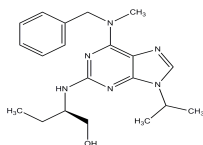


PRODUCT: Aftin-4**ALTERNATE NAME:** N⁶-Methyl-(R)-roscovitine; Amyloid-β Forty-Two Inducer 4**CATALOG #:** 2574-1, 5**AMOUNT:** 1 mg, 5 mg**STRUCTURE:****MOLECULAR FORMULA:** C₂₀H₂₈N₆O**MOLECULAR WEIGHT:** 368.48**CAS No.** 866893-90-5**APPEARANCE:** White to off-white solid**SOLUBILITY:** DMSO or EtOH**PURITY:** ≥98% by NMR**STORAGE:** Store at -20°C. Protect from air and light

DESCRIPTION: A Roscovitine-related purine derivative that selectively and potently increases production of extracellular Aβ₄₂ and decreases production of extracellular Aβ₃₈ in cultured cells. Extracellular Aβ₄₀ levels remain stable. Intracellular levels of these amyloids appear to remain stable. Alzheimer's Disease (AD) accelerator that interacts with VDAC1, prohibitin and mitofilin, possibly interfering with subcellular compartmentalization and lipid rafts properties, shifting γ-secretase activity toward Aβ₄₂ generation. Induces a reversible mitochondrial phenotype reminiscent of the one observed in AD brains.

REFERENCES: Hochard, A., *et al.* (2013). *J. Alzheimers Dis.* **35**, 107-120.**HANDLING:** Do not take internally. Wear gloves and mask when handling the product! Avoid contact by all modes of exposure.**RELATED PRODUCTS:**

APP Antibody (Cat. No. 6001-100)

Beta-Secretase, human recombinant (Cat. No. 7604-20, 100, 1000)

Beta-Secretase Activity Assay Kit (Cat. No. K360-100)

Beta Secretase Inhibitor I (Cat. No. 7501-1)

Beta Secretase Inhibitor II (Cat. No. 7502-1)

Compound 34 (Cat. No. 1898-200, 1000)

Compound E (Cat. No. 1949-250, 1000)

Compound W (Cat. No. 2208-50, 250)

DAPT (Cat. No. 1855-5)

L-685, 258 (Cat. No. 1713-250)

LY2886721 (Cat. No. 2399-5, 25)

RO4929097 (Cat. No. 2011-1, 5)

Semagacestat (Cat. No. 2430-1, 5)

TACE Antibody (Cat. No. 3222-100)

USAGE: **FOR RESEARCH USE ONLY! Not to be used in humans.**