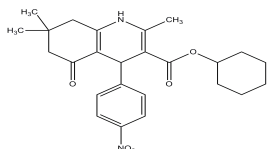


Product: FLI-06**ALTERNATE NAME:** Cyclohexyl 1,4,5,6,7,8-hexahydro-2,7,7-trimethyl-4-(4-nitrophenyl)-5-oxo-3-quinolinecarboxylate**CATALOG #:** 2603-5, 25**AMOUNT:** 5 mg, 25 mg**STRUCTURE:****MOLECULAR FORMULA:** C₂₅H₃₀N₂O₅**MOLECULAR WEIGHT:** 438.52**CAS No.** 313967-18-9**APPEARANCE:** Yellow solid**SOLUBILITY:** DMSO (~40 mg/ml) or EtOH (~ 8 mg/ml)**PURITY:** >98% by HPLC**STORAGE:** Store at -20°C. Protect from air and light**DESCRIPTION:** A potent Notch signaling (EC₅₀ = 2.3 μM) as well as the early secretory pathway inhibitor. FLI-06 leads to a disruption of the Golgi by a mechanism different from Brefeldin A (Cat. No. 1560) or other known secretion inhibitors. FLI-06 blocks secretion by inhibiting the recruitment of cargo to ER exit sites, but not the formation of COPII vesicles. FLI-06 transforms the tubular regions of the ER to large sheets, suggesting that regions of high curvature at ER exit sites are essential for the recruitment of cargo.**REFERENCES:** Krämer, A., *et al.* (2013). *Nat. Chem. Biol.* **9**, 731-738.**HANDLING:** Do not take internally. Wear gloves and mask when handling the product! Avoid contact by all modes of exposure.**RELATED PRODUCTS:**

APP Antibody (Cat. No. 6001-100)

Beta-Secretase, human recombinant (Cat. No. 7604-20, 100, 1000)

Beta-Secretase Activity Assay Kit (Cat. No. K360-100)

Beta Secretase Inhibitor I (Cat. No. 7501-1)

Beta Secretase Inhibitor II (Cat. No. 7502-1)

Compound 34 (Cat. No. 1898-200, 1000)

Compound E (Cat. No. 1949-250, 1000)

Compound W (Cat. No. 2208-50, 250)

DAPT (Cat. No. 1855-5)

L-685, 258 (Cat. No. 1713-250)

LY2886721 (Cat. No. 2399-5, 25)

RO4929097 (Cat. No. 2011-1, 5)

Semagacestat (Cat. No. 2430-1, 5)

TACE Antibody (Cat. No. 3222-100)

FOR RESEARCH USE ONLY! Not to be used in humans.