

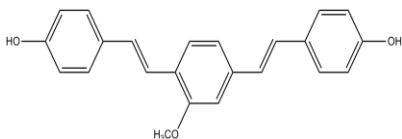
Methoxy-X04

ALTERNATE NAME: 4,4'-[(2-methoxy-1,4-phenylene)di-(1*E*)-2,1-ethenediyl]bisphenol

CATALOG #: 2664-5, 25

AMOUNT: 5 mg, 25 mg

STRUCTURE:



MOLECULAR FORMULA: C₂₃H₂₀O₃

MOLECULAR WEIGHT: 344.40

CAS NUMBER: 863918-78-9

APPEARANCE: Yellow solid

SOLUBILITY: DMSO (>30 mg/ml) or EtOH (~ 5 mg/ml)

PURITY: ≥ 95%

STORAGE: Store at -20 °C. Protect from air and light

DESCRIPTION: Methoxy-X04 is a derivative of Congo Red (Cat. No. 2588) and Chrysamine G that acts as a fluorescent probe for the detection of amyloid self-assembly in vitro and in vivo. It stains plaques, tangles, and cerebrovascular amyloid in postmortem sections of AD brain with good specificity.

REFERENCE: Klunk, W.E., *et al.* (2002). *J. Neuropathol. Exp. Neurol.* **61**, 797-805.

HANDLING: Do not take internally. Wear gloves and mask when handling the product! Avoid contact by all modes of exposure.

RELATED PRODUCTS:

Congo Red (Cat. No. 2588-100, 500)

Evans Blue Tetrasodium (Cat. No. 2586-1G)

JM6 (Cat. No. 1913-5, 25)

Rose Bengal (Cat. No. 2587-100, 500)

FOR RESEARCH USE ONLY! Not to be used on humans.