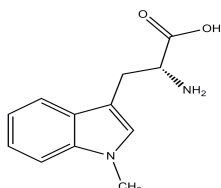


## Product: IDO Pathway inhibitor

### RELATED PRODUCTS:

INCB024360 (Cat. No. 2745-5, 25)

Menadione (Cat. No. 2747-500, 1000)

**ALTERNATE NAME:** 1-Methyl-D-tryptophan; Indoximod**CATALOG #:** 2746-50, 250**AMOUNT:** 50 mg, 250 mg**STRUCTURE:****MOLECULAR FORMULA:** C<sub>12</sub>H<sub>14</sub>N<sub>2</sub>O<sub>2</sub>**MOLECULAR WEIGHT:** 218.25**CAS NUMBER:** 110117-83-4**APPEARANCE:** White to off-white solid**SOLUBILITY:** DMSO**PURITY:** ≥95%**STORAGE:** Store at -20 °C. Protect from air and light**DESCRIPTION:** IDO pathway inhibitor is a methylated tryptophan with anti-immunosuppressive activity. 1-Methyl-D-tryptophan inhibits the enzyme indoleamine 2,3-dioxygenase (IDO), which degrades the essential amino acid tryptophan, and may increase or maintain tryptophan levels important to T cell function.**REFERENCE:** Opitz, C.A., *et al.* (2011). *PLoS One* **6**, e19823**HANDLING:** Do not take internally. Wear gloves and mask when handling the product! Avoid contact by all modes of exposure.**FOR RESEARCH USE ONLY! Not to be used on humans.**