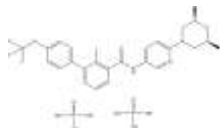


PRODUCT: LDE-225 diphosphate

ALTERNATE NAME: N-(6-((2R,6S)-2,6-dimethylmorpholino)pyridin-3-yl)-2-methyl-4'-(trifluoromethoxy)-[1,1'-biphenyl]-3-carboxamide diphosphate; Sonidegib ; Erismodegib ; NVP-LDE225 diphosphate

CATALOG #: 2893-5, 25

AMOUNT: 5 mg, 25 mg



STRUCTURE:

MOLECULAR FORMULA: C₂₆H₃₂F₃N₃O₁₁P₂

MOLECULAR WEIGHT: 681.49

CAS NUMBER: 1218778-77-8

APPEARANCE: Off-white solid

SOLUBILITY: DMSO (~ 10 mg/ml)

PURITY: ≥98% by HPLC

STORAGE: Store at -20 °C. Protect from air and moisture

DESCRIPTION: LDE-225 diphosphate is the phosphate analog of Smoothened (Smo) antagonist LDE-225 (Cat. No. 2892).

REFERENCES: D'Amato, C., *et al.* (2014). *Br. J. Cancer* 111, 1168-1179; Pan, S., *et al.* (2010). *ACS Med. Chem. Let.* 1, 130-134.

HANDLING: Do not take internally. Wear gloves and mask when handling the product! Avoid contact by all modes of exposure.

RELATED PRODUCTS:

BODIPY-Cyclopamine (Cat. No. 2160-50, 250)

CUR-61414 (Cat. No. 2743-5, 25)

Cyclopamine (Cat. No. 1578-5)

EZSolution™ Cyclopamine (Cat. No. 2545-5)

Cyclopamine-KAAD (Cat. No. 1910-50)

GANT58 (Cat. No. 1812-5, 25)

GANT61 (Cat. No. 1892-5)

GDC-0449 (Cat. No. 1890-5, 25)

EZSolution™ GDC-0449 (Cat. No. 2539-5)

Hh Signaling Pathway Antagonist (Cat. No. 1659-1)

DiscoveryPak™ hedgehog Signaling Pathway Antagonists Set (Cat. No. K868-6)

HPI-1 (Cat. No. 2410-5, 25)

Itraconazole (Cat. No. 1987-50, 100, 500, 1000)

Jervine (Cat. No. 2357-1, 5)

JK-184 (Cat. No. 1726-1)

LDE-225 (Cat. No. 2892-5, 25)

Purmorphamine (Cat. No. 1672-5)

Robotnikinin (Cat. No. 1923-1)

SANT-1 (Cat. No. 1978-1,5)

SANT-2 (Cat. No. 1976-1, 5)

Smo Antagonist, SA1 (Cat. No. 2154)

Smo Antagonist, SA9 (Cat. No. 2155)

Smo Antagonist, SA10 (Cat. No. 2159)

Sonic Hedgehog, human recombinant (Cat. No. 4010-25, 100, 1000)

Sonic Hedgehog, murine recombinant (Cat. No. 4020-25, 100, 1000)

Tomatidine hydrochloride (Cat. No. 1893-25)

USAGE: **FOR RESEARCH CH USE ONLY! Not to be used in humans**