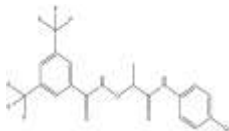


PRODUCT: CCG-1423**RELATED PRODUCTS:**
CID-1067700 (Cat. No. 2688-5, 25)**ALTERNATE NAME:** N-[2-[(4-Chlorophenyl)amino]-1-methyl-2-oxoethoxy]-3,5-bis(trifluoromethyl)benzamide**CATALOG #:** 9434-5, 25**AMOUNT:** 5 mg, 25 mg**STRUCTURE:****MOLECULAR FORMULA:** C₁₈H₁₃ClF₆N₂O₃**MOLECULAR WEIGHT:** 454.75**CAS NUMBER:** 285986-88-1**APPEARANCE:** White solid**SOLUBILITY:** DMSO (~40 mg/ml)**PURITY:** ≥98% by HPLC**STORAGE:** Store at -20°C. Protect from air and light**DESCRIPTION:** CCG-1423 is a specific inhibitor of Rho pathway-mediated signaling and activation of serum response factor (SRF) transcription. CCG-1423 displays activity in several in vitro cancer cell functional assays. CCG-1423 potently (<1 μmol/L) inhibits lysophosphatidic acid-induced DNA synthesis in PC-3 prostate cancer cells, and whereas it inhibits the growth of RhoC-overexpressing melanoma lines at nanomolar concentrations, it is less active on related lines that express lower levels of Rho. Similarly, CCG-1423 selectively stimulates apoptosis of the metastasis-prone, RhoC-overexpressing melanoma cell line (A375M2) compared with the parental cell line (A375).**REFERENCES:** Evelyn, C.R., *et al.* (2007). *Mol. Cancer Ther.* **6**, 2249-2260.**HANDLING:** Do not take internally. Wear gloves and mask when handling the product! Avoid contact by all modes of exposure.**USAGE:** **FOR RESEARCH CH USE ONLY! Not to be used in humans**