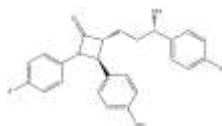


PRODUCT: Ezetimibe**ALTERNATE NAME:** (3R,4S)-1,4-fluorophenyl-3-[(3S-3-4-fluorophenyl)-3-hydroxypropyl]-4-(4-hydroxyphenyl)-2-azetidinone**CATALOG #:** 9468-25, 100**AMOUNT:** 25 mg, 100 mg**STRUCTURE:****MOLECULAR FORMULA:** C₂₄H₂₁F₂NO₃**MOLECULAR WEIGHT:** 409.43**CAS NUMBER:** 163222-33-1**APPEARANCE:** White solid**SOLUBILITY:** DMSO (~15 mg/ml)**PURITY:** ≥98% by HPLC**STORAGE:** Store at -20°C. Protect from air and light**DESCRIPTION:** Ezetimibe is a cholesterol transport inhibitor. Ezetimibe inhibits intestinal cholesterol absorption by preventing cholesterol uptake by the Niemann-Pick C1-like 1 (NPC1L1) protein, a cholesterol transporter located in the apical membrane of enterocytes. It exhibits IC₅₀ values of 0.0005-0.05 mg/kg in various animal models, selectively blocking cholesterol absorption without inhibiting pancreatic lipolytic enzyme activities in the intestinal lumen, affecting bile acid micelle solubilization of cholesterol, or interfering with the absorption of triglycerides, fatty acids, or bile acids.**REFERENCES:** Garcia-Calvo, M., *et al.* (2005). *Proc. Natl. Acad. Sci. USA* **102**, 8132-8137.**HANDLING:** Do not take internally. Wear gloves and mask when handling the product! Avoid contact by all modes of exposure.**RELATED PRODUCTS:**Cholesterol Efflux Fluorometric Assay Kit (**Cat. No. K582-100**)Cholesterol Detection Kit (**Cat. No. K587-100**)Atorvastatin (**Cat. No. 2278-10, 50**)Lovastatin (**Cat. No. 1692-50, 250**)Mevastatin (**1694-50, 250**)Simvastatin (**Cat. No. 1693-50, 250**)Rosuvastatin (**Cat. No. 1955-5, 25**)**USAGE:** **FOR RESEARCH CH USE ONLY! Not to be used in humans**