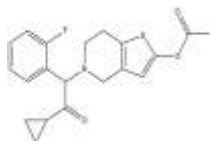


**PRODUCT: Prasugrel****RELATED PRODUCTS:**  
AZD-1283 (Cat. No. 2838-5, 25)  
Eptifibatide (Cat. No. 2439-1)**ALTERNATE NAME:** 2-[2-(Acetyloxy)-6,7-dihydrothieno[3,2-c]pyridin-5(4H)-yl]-1-cyclopropyl-2-(2-fluorophenyl)ethanone; CS-747, LY640315**CATALOG #:** 9472-10, 50**AMOUNT:** 10 mg, 50 mg**STRUCTURE:****MOLECULAR FORMULA:** C<sub>20</sub>H<sub>20</sub>FNO<sub>3</sub>S**MOLECULAR WEIGHT:** 373.44**CAS NUMBER:** 150322-43-3**APPEARANCE:** White to off-white solid**SOLUBILITY:** DMSO (>5 mg/ml on warming)**PURITY:** ≥98% by HPLC**STORAGE:** Store at -20°C. Protect from air and light**DESCRIPTION:** Prasugrel is novel thienopyridine antiplatelet prodrug that is metabolized to the thiol-containing active metabolite R-138727, which binds to and irreversibly inhibits the platelet P2Y<sub>12</sub>ADP receptor. Prasugrel is metabolized by the liver- and intestinal-dominant carboxylesterases CE1 and CE2 to give a mixture of four enantiomers that inhibit platelet aggregation.**REFERENCES:** Sugidachi, A., et al. (2000). *Br. J. Pharmacol.* **129**, 1439-1446.**HANDLING:** Do not take internally. Wear gloves and mask when handling the product! Avoid contact by all modes of exposure.**USAGE:** **FOR RESEARCH CH USE ONLY! Not to be used in humans**