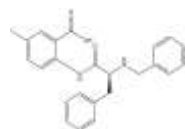


**PRODUCT:****ALTERNATE NAME:****CATALOG #:****AMOUNT:****STRUCTURE:****MOLECULAR FORMULA:****MOLECULAR WEIGHT:****CAS NUMBER:****APPEARANCE:****SOLUBILITY:****PURITY:****STORAGE:****DESCRIPTION:****REFERENCES:****CW069**

5-Iodo-2-[[[(2S)-1-oxo-3-phenyl-2-[(phenylmethyl)amino]propyl]amino]-benzoic acid

9507-10, 50

10 mg, 50 mg

 $C_{23}H_{21}IN_2O_3$ 

500.33

1594094-64-0

Crystalline solid

DMSO (&gt;35 mg/ml)

≥98% by HPLC

Store at -20°C. Protect from air and light

CW069 is an allosteric inhibitor of the microtubule motor protein HSET that induces multipolar mitoses only in cells containing supernumerary centrosomes.

Watts, C.A., *et al.* (2013). *Chem. Biol.* **20**, 1399-1410.

**HANDLING:**

Do not take internally. Wear gloves and mask when handling the product! Avoid contact by all modes of exposure.

**RELATED PRODUCTS:**

ABT751 (Cat. No. 2836-5, 25)

Colchicine (Cat. No. 1519-1000)

Combretastatin A (Cat. No. 2239-10, 50)

Docetaxel (Cat. No. 2232-10, 50)

ELR-510444 (Cat. No. 9433-5, 25)

Epothilone B (Cat. No. 2012-1,5)

Nocodazole (Cat. No. 2185-10, 50)

Paclitaxel (Cat. No. 1567-25)

Podophyllotoxin (Cat. No. 2767-50)

Pseudolaric acid B (Cat. No. 2512-1, 5)

Tamoxifen Citrate (Cat. No. 1551-1000)

Vinblastin sulfate (Cat. No. 1959-5, 25)

Vinorelbine tartrate (Cat. No. 1957-5, 25)

**USAGE:****FOR RESEARCH CH USE ONLY! Not to be used in humans**