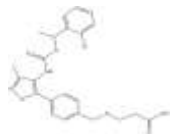


PRODUCT: Ki 16425**RELATED PRODUCTS:**
VU0361737 (Cat. No. 9418-5,25)**ALTERNATE NAME:** 3-[[[4-[4-[[[1-(2-Chlorophenyl)ethoxy]carbonyl]amino]-3-methyl-5-isoxazolyl]phenyl]methyl]thio]propanoic acid**CATALOG #:** 9545-5,25**AMOUNT:** 5 mg, 25 mg**STRUCTURE:****MOLECULAR FORMULA:** C₂₃H₂₃ClN₂O₅S**MOLECULAR WEIGHT:** 474.96**CAS NUMBER:** 355025-24-0**APPEARANCE:** Off-white solid**SOLUBILITY:** DMSO (>30 mg/ml) or EtOH (>20 mg/ml)**PURITY:** ≥98% by HPLC**STORAGE:** Store at -20°C. Protect from air and light**DESCRIPTION:** Ki 16425 is a LPA (Lysophosphatidic acid) receptor antagonist with selectivity for LPA₁ and LPA₃. It exhibits K_i values of 0.34, 6.5, and 0.93 μM for the human LPA₁, LPA₂, and LPA₃ receptors, respectively, as determined by measuring inositol phosphate production in RH7777-transfected cells.**REFERENCES:** Ohta, H., *et al.* (2003). *Mol. Pharmacol.* **64**, 994-1005.**HANDLING:** Do not take internally. Wear gloves and mask when handling the product! Avoid contact by all modes of exposure.**USAGE:** **FOR RESEARCH CH USE ONLY! Not to be used in humans**