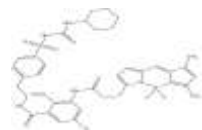


**PRODUCT: ER-Hunt Green****RELATED PRODUCTS:**  
ER-Hunt Green (Cat. No. 9548)  
ER-Hunt Red (Cat. No. 9549)**ALTERNATE NAME:** 7-(3-((5-Chloro-3-((4-(N-(cyclohexylcarbamoyl)sulfamoyl)phenethyl)carbamoyl)-2-methoxyphenyl)amino)-3-oxopropyl)-5,5-difluoro-1,3-dimethyl-5H-dipyrrolo[1,2-c:2',1'-f][1,3,2]diazaborinin-4-ium-5-uide; EverFluor FL Glibenclamide; BODIPY® FL Glibenclamide**CATALOG #:** 9548-100**AMOUNT:** 100 µg**STRUCTURE:****MOLECULAR FORMULA:** C<sub>37</sub>H<sub>42</sub>BClF<sub>2</sub>N<sub>6</sub>O<sub>6</sub>S**MOLECULAR WEIGHT:** 783.09**CAS NUMBER:** N/A**APPEARANCE:** Yellow solid**SOLUBILITY:** DMSO**PURITY:** ≥90% by HPLC**STORAGE:** Store at -20°C. Protect from air and light**DESCRIPTION:** ER-Hunt Green is a cell-permeable, live-cell stain that is selective for the endoplasmic reticulum (ER). Glibenclamide (glyburide) binds to the sulphonylurea receptors of ATP-sensitive K<sup>+</sup> channels which are prominent on ER. λ<sub>EX</sub>: 504 ± 3 nM (MeOH); λ<sub>EM</sub>: 511 ± 4 nM (MeOH).**HANDLING:** Do not take internally. Wear gloves and mask when handling the product! Avoid contact by all modes of exposure.**USAGE:** *FOR RESEARCH CH USE ONLY! Not to be used in humans*