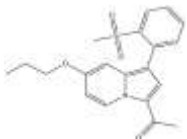


PRODUCT: GSK-2801**ALTERNATE NAME:** 1-(7-(2-Methylsulfonyl-phenyl)-4-propoxy-1-aza-bicyclo[4.3.0]nona-2,4,6,8-tetraen-9-yl)-ethanone**CATALOG #:** 9553-5, 25**AMOUNT:** 5 mg, 25 mg**STRUCTURE:****MOLECULAR FORMULA:** C₂₀H₂₁NO₄S**MOLECULAR WEIGHT:** 371.54**CAS NUMBER:** 1619994-68-1**APPEARANCE:** Of-white solid**SOLUBILITY:** DMSO (~10 mg/ml)**PURITY:** ≥98% by HPLC**STORAGE:** Store at -20°C. Protect from air and light**DESCRIPTION:** GSK-2801 is a potent, selective and cell-permeable inhibitor of the BAZ2 family of bromodomain containing proteins. GSK-2801 binds to BAZ2 bromodomains with dissociation constants (K_D) of 136 and 257 nM for BAZ2B and BAZ2A, respectively.**REFERENCES:** Chen, P., et al. (2015). *J. Med. Chem.* 10.1021/acs.jmedchem.5b00209**HANDLING:** Do not take internally. Wear gloves and mask when handling the product! Avoid contact by all modes of exposure.**RELATED PRODUCTS:**

AMI-1 (Cat. No. 1943-5, 25)
 Aza-2'-deoxycytidine (Cat. No. 1754-10, 50)
 5- BIX01294 (Cat. No. 1678-5, 25)
 Bromodomain Inhibitor, (+)-JQ1 (Cat. No. 2070-1, 5)
 Bromosporine (Cat. No. 2652-1,5)
 CPI-203 (Cat. No. 9404-1,5)
 EPZ004777 (Cat. No. 2381-1, 5)
 EPZ-5676 (Cat. No. 2382-1, 5)
 EPZ-6438 (E7438) (Cat. No. 2383-1, 5)
 EPZ005687 (Cat. No. 2364-2, 10)
 EZSolution™ EPZ005687 (Cat. No. 2375-2)
 EZSolution™ GSK126 (Cat. No. 2366-1)
 3-Deazaneplanocin (Cat. No. 2060-250, 1000)
 GSK343 (Cat. No. 2281-1, 5)
 EZSolution™ GSK343 (Cat. No. 2365-1)
 EZSolution™ GSK126 (Cat. No. 2366-1)
 GSK126 (Cat. No. 2282-1, 5)
 (+)-JQ1 (Cat. No. 2070-1, 5)
 I-CBP112 (Cat. No. 9405-1, 5)
 EZSolution™ (+)-JQ1 (Cat. No. 2091-1)
 (-)-JQ1 (Cat. No. 2384-1)
 I-BET151 (Cat. No. 2220-1, 5)
 I-BET762 (Cat. No. 2628-1,5)
 Lomeguatrib (Cat. No. 2224-5, 25)
 MS436 (Cat. No. 2680-5, 25)
 OTX015 (Cat. No. 2651-1. 5)
 PFI-1 (Cat. No. 2203-1, 5)
 PFI-3 (Cat. No. 2895-5, 25)
 RG108 (Cat. No. 1679-10, 30)
 UNC0638 (Cat. No. 1933-1,
 Zebularine (Cat. No. 2225-1, 5)

USAGE: **FOR RESEARCH CH USE ONLY! Not to be used in humans**