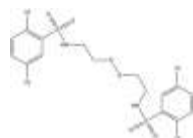


PRODUCT: KC7F2**ALTERNATE NAME:** N,N'-(dithiodi-2,1-ethanediy)bis[2,5-dichloro-benzenesulfonamide**CATALOG #:** 9641-10, 50**AMOUNT:** 10 mg, 50 mg**STRUCTURE:****MOLECULAR FORMULA:** C₁₆H₁₆Cl₄N₂O₄S₄**MOLECULAR WEIGHT:** 570.38**CAS#:** 927822-86-4**APPEARANCE:** White solid**SOLUBILITY:** DMSO (>50 mg/ml)**PURITY:** ≥98% by HPLC**STORAGE:** Store at -20°C Protect from air and light**DESCRIPTION:** KC7F2 is a small molecule HIF-1 pathway inhibitor that inhibits HIF-1 α protein translation, but not transcription. It inhibits hypoxia-induced expression of several HIF target genes, such as carbonic anhydrase IX, matrix metalloproteinase 2, enolase 1, and endothelin 1. KC7F2 is cytotoxic to a variety of cancer cell lines with an IC₅₀ value of 15-25 μ M.**REFERENCE:** Narita, T., *et al.* (2009). *Cancer Res.* **15**, 6128-6136.**HANDLING:** Do not take internally. Wear gloves and mask when handling the product! Avoid contact by all modes of exposure.**RELATED PRODUCTS:**Chetomin (**Cat. No. 2180**)Emetine dihydrochloride (**1970**)PX 12 (**Cat. No. 2217**)**USAGE:****FOR RESEARCH USE ONLY! Not to be used in humans!**