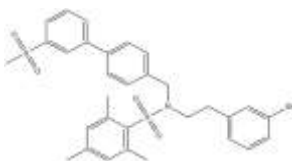


**PRODUCT: SR9243****ALTERNATE NAME:** N-[2-(3-bromophenyl)ethyl]-2,4,6-trimethyl-N-[[3'-(methylsulfonyl)[1,1'-biphenyl]-4-yl]methyl]-benzenesulfonamide**CATALOG #:** 9642-10, 50**AMOUNT:** 10 mg, 50 mg**STRUCTURE:****MOLECULAR FORMULA:** C<sub>31</sub>H<sub>32</sub>BrNO<sub>4</sub>S<sub>2</sub>**MOLECULAR WEIGHT:** 626.62**CAS#:** 1613028-81-1**APPEARANCE:** White solid**SOLUBILITY:** DMSO (>6 mg/ml)**PURITY:** ≥98% by HPLC**STORAGE:** Store at -20°C. Protect from air and light**DESCRIPTION:** SR9243 is a potent, cell-permeable and selective LXR inverse agonist. SR9243 kills cancer cells by inhibiting lipid production and the Warburg effect. It induces cell death in multiple types of cancer and does not cause the side effects that have derailed previous attempts to target these processes.**REFERENCE:** Flaveny, C.A., *et al.* (2015). *Cancer Cell* **28**, 42-56.**HANDLING:** Do not take internally. Wear gloves and mask when handling the product! Avoid contact by all modes of exposure.**RELATED PRODUCTS:**

LXR Antibody (Cat. No. 3641-100)

GW-3965 hydrochloride (Cat. No. 9402-5, 25)

**USAGE:** FOR RESEARCH USE ONLY! Not to be used in humans!