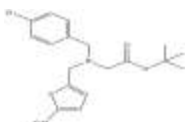


**PRODUCT: GSK-4112****ALTERNATE NAME:** 1,1-Dimethylethyl-N-[(4-chlorophenyl)methyl]-N-[(5-nitro-2-thienyl)methyl]glycinate; SR 6452**CATALOG #:** 9663-5, 25**AMOUNT:** 5 mg, 25 mg**STRUCTURE:****MOLECULAR FORMULA:** C<sub>18</sub>H<sub>21</sub>ClN<sub>2</sub>O<sub>4</sub>S**MOLECULAR WEIGHT:** 396.89**CAS#:** 1216744-19-2**APPEARANCE:** Off-white solid**SOLUBILITY:** DMSO (~10 mg/ml)**PURITY:** ≥98%**STORAGE:** Store at -20°C. Protect from air and light.**DESCRIPTION:** GSK-4112 is a selective agonist for REV-ERB $\alpha$  (EC<sub>50</sub> = 0.4  $\mu$ M). At 10  $\mu$ M, GSK-4112 can reset the circadian rhythm in a phasic manner by inhibiting expression of the circadian target gene *bmal1* and reduce glucose output by 30% in mouse primary hepatocytes by repressing the expression of several gluconeogenic genes. GSK-4112 is useful as a chemical tool to probe the function of REV-ERB $\alpha$  in transcriptional repression, regulation of circadian biology, and metabolic pathways.**REFERENCE:** Grant, D., *et al.* (2010). *ACS Chem. Biol.* **5**, 925-932.**HANDLING:** Do not take internally. Wear gloves and mask when handling the product! Avoid contact by all modes of exposure.**RELATED PRODUCTS:**

ADX-47273 (Cat. No. 9562-10, 50)

Congo Red (Cat. No. 2588-100 500)

Evans Blue Tetrasodium (Cat. No. 2586-1G)

Kainic acid (Cat. No. 2279-5, 25)

LY404187 (Cat. No. 2698-5, 25)

LY-341495 (Cat. No. 2875-1,5)

Rose Bengal (Cat. No. 2587-100, 500)

**USAGE:****FOR RESEARCH USE ONLY! Not to be used in humans!**