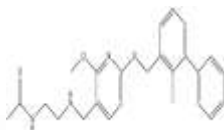


**PRODUCT: PD-1/PD-L1 Inhibitor 2****ALTERNATE NAME:** N-[2-[[[2-Methoxy-6-[(2-methyl[1,1'-biphenyl]-3-yl)methoxy]-3-pyridinyl]methyl]amino]ethyl]-acetamide**CATALOG #:** B1050-5, 25**AMOUNT:** 5 mg, 25 mg**STRUCTURE:****MOLECULAR FORMULA:** C<sub>25</sub>H<sub>29</sub>N<sub>3</sub>O<sub>3</sub>**MOLECULAR WEIGHT:** 419.52**CAS NUMBER:** 1675203-84-5**APPEARANCE:** Crystalline solid**SOLUBILITY:** DMSO (~ 2 mg/ml)**PURITY:** ≥98% by HPLC**STORAGE:** Store at -20°C. Protect from air and light**DESCRIPTION:** PD-1/PD-L1 Inhibitor 2 is a novel immunomodulator that prevents the interaction of PD-L1 with PD-1 (IC<sub>50</sub> = 18 nM).**REFERENCES:** Pardoll, D.M. (2012). *Nat. Rev. Cancer* **12**, 252-264.**HANDLING:** Do not take internally. Wear gloves and mask when handling the product! Avoid contact by all modes of exposure.**RELATED PRODUCTS:**PD-1/PDCD1 Antibody (**6931**)PD-1 (human) ELISA Kit (**K4153**)Human CellExp™ PD-1/PDCD1, Human Recombinant (**7498**)Human CellExp™ PD-1/PDCD1, Mouse Recombinant (**7499**)Human CellExp™ PD-1/PDCD1, C-Fc Tag, Human Recombinant (**7500**)Human CellExp™ PD-1/PDCD1, C-Fc Tag, Mouse Recombinant (**7503**)Human CellExp™ Biotinylated PD-1/PDCD1, C-Fc Tag, Human Recombinant (**7877**)**USAGE:** **FOR RESEARCH CH USE ONLY! Not to be used in humans**