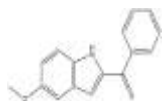


PRODUCT: D-64131**ALTERNATE NAME:** (5-Methoxy-1*H*-indol-2-yl)phenylmethanone**CATALOG #:** B1066-10, 50**AMOUNT:** 10 mg, 50 mg**STRUCTURE:****MOLECULAR FORMULA:** C₁₆H₁₃NO₂**MOLECULAR WEIGHT:** 251.28**CAS NUMBER:** 74588-78-6**APPEARANCE:** Yellow solid**SOLUBILITY:** DMSO (>20 mg/ml)**PURITY:** ≥98% by HPLC**STORAGE:** Store at -20 °C. Protect from moisture**DESCRIPTION:** D-64131 is a potent tubulin polymerization inhibitor. Cytotoxic and inhibits tumor cell proliferation *in vitro* (IC₅₀ = 74 nM). Antimitotic agent. Induces G2/M cell cycle arrest.**REFERENCE:** Chung, S., *et al.* (2012). *Oncotarget* **3**, 1629-1640.**HANDLING:** Do not take internally. Wear gloves and mask when handling the product! Avoid contact by all modes of exposure.**RELATED PRODUCTS:**

ABT751 (Cat. No. 2836-5, 25)

Colchicine (Cat. No. 1519-1000)

Combretastatin A (Cat. No. 2239-10, 50)

Docetaxel (Cat. No. 2232-10, 50)

ELR-510444 (Cat. No. 9433-5,25)

Epothilone B (Cat. No. 2012-1,5)

Nocodazole (Cat. No. 2185-10, 50)

Paclitaxel (Cat. No. 1567-25)

Podophyllotoxin (Cat. No. 2767-50)

Pseudolaric acid B (Cat. No. 2512-1, 5)

Tamoxifen Citrate (Cat. No. 1551-1000)

Vinblastin sulfate (Cat. No. 1959-5, 25)

Vinorelbine tartrate (Cat. No. 1957-5, 25)

USAGE: **FOR RESEARCH USE ONLY! Not to be used in humans**