

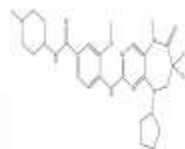
PRODUCT: Ro3280

ALTERNATE NAME: 4-((9-cyclopentyl-7,7-difluoro-5-methyl-6-oxo-6,7,8,9-tetrahydro-5H-pyrimido[4,5-b][1,4]diazepin-2-yl)amino)-3-methoxy-N-(1-methylpiperidin-4-yl)benzamide

CATALOG #: B1175-5, 25

AMOUNT: 5 mg, 25 mg

STRUCTURE:



MOLECULAR FORMULA: C₂₇H₃₅F₂N₇O₃

MOLECULAR WEIGHT: 543.61

CAS NUMBER: 1062243-51-9

APPEARANCE: Crystalline solid

SOLUBILITY: DMSO

PURITY: ≥98% by HPLC

STORAGE: Store at -20°C. Protect from air and light.

DESCRIPTION: RO3280 is a potent, highly selective inhibitor of Polo-like kinase 1 (PLK1 (IC₅₀ = 3 nM)).

REFERENCES: Chen, S., *et al.* (2012). *Bioorg. Med. Chem. Lett.* **22**, 1247-1250.

HANDLING: Do not take internally. Wear gloves and mask when handling the product! Avoid contact by all modes of exposure.

RELATED PRODUCTS:

BI-6727 (Cat. No. 2222-1,5)

BI-2536 (Cat. No. 2370-5, 25)

GSK461364 (Cat. No. 2287-5, 25)

Ro3280 (Cat. No. B1175-5,25)

SBE13 hydrochloride (Cat. No. 2847-10, 50)

USAGE: **FOR RESEARCH CH USE ONLY! Not to be used in humans**