

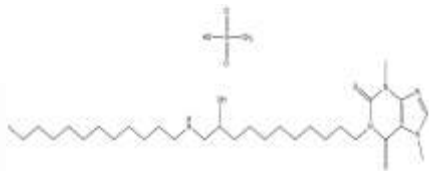
PRODUCT: CT-2584

ALTERNATE NAME: 1-(11-Dodecylamino-10-hydroxyundecyl)-3,7-dimethylxanthine methane sulfonate

CATALOG #: B1182-5,25

AMOUNT: 5 mg, 25 mg

STRUCTURE:



MOLECULAR FORMULA: $C_{30}H_{55}N_5O_3 \cdot CH_3SO_3H$

MOLECULAR WEIGHT: 629.9

CAS NUMBER: 166981-13-1 (free base)

APPEARANCE: White Solid

SOLUBILITY: DMSO (~25 mg/ml)

PURITY: ≥98% by TLC

STORAGE: Store at -20°C. Protect from air and light.

DESCRIPTION: CT-2584 is a cytotoxic agent that alters phospholipid biosynthesis via inhibition of CTP:choline-phosphate cytidyltransferase causing an increase in phosphatidylinositol will decreasing levels of phosphatidylcholine. The altered phospholipid metabolism caused by CT-2584 results in a loss of lamellar structure and membrane integrity (especially in mitochondria and endoplasmic reticulum). CT-2584 was active against a wide range of tumor cell lines including multi-drug resistant lines.

REFERENCES: Bonfil, R.D. 2001). *Curr Opin Investig. Drugs* **3**, 424-7

HANDLING: Do not take internally. Wear gloves and mask when handling the product! Avoid contact by all modes of exposure.

RELATED PRODUCTS:

Colchicine (**Cat. No. 1519-1000**)
 Combretastatin A (**Cat. No. 2239-10, 50**)
 Docetaxel (**Cat. No. 2232-10, 50**)
 Epothilone B (**Cat. No. 2012-1,5**)
 Etoposide (**Cat. No. 1043-25Mg, 25MG**)
 Etoposide phosphate (**Cat. No. 2896-10,50**)
 Nocodazole (**Cat. No. 2185-10, 50**)
 Paclitaxel (**Cat. No. 1567-25**)
 Podophyllotoxin (**Cat. No. 2767-50**)
 Pseudolaric acid B (**Cat. No. 2512-1, 5**)
 Tamoxifen Citrate (**Cat. No. 1551-1000**)
 Vinblastin sulfate (**Cat. No. 1959-5, 25**)
 Vinorelbine tartrate (**Cat. No. 1957-5, 25**)
 A771726 (**Cat. No. 1973-5, 25**)
 Ascomycin (**Cat. No. 1570-2**)
 Cyclosporin A (**Cat. No. 1522-100, 1G**)
 (R,S)-Lenalidomide (**Cat. No. 1862-25, 100**)
 FK506 (**Cat. No. 1563-1,10**)
 Leflunomide (**Cat. No. 1972-10, 50**)
 Mycophenolic acid (**Cat. No. 1882-50, 250**)
 Rapamycin (**Cat. No. 1568-5, 50**)
 Rocaglamide (**Cat. No. 1863-100**)

USAGE: **FOR RESEARCH CH USE ONLY! Not to be used in humans**