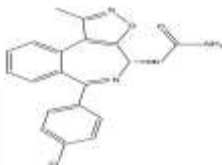


PRODUCT: CPI-0610**ALTERNATE NAME:** (S)-2-(6-(4-chlorophenyl)-1-methyl-4H-benzo[c]isoxazolol[4,5-e]jazepin-4-yl)acetamide**CATALOG #:** B1201-5,25**AMOUNT:** 5 mg, 25 mg**STRUCTURE:****MOLECULAR FORMULA:** C₂₀H₁₆ClN₃O₂**MOLECULAR WEIGHT:** 365.82**CAS NUMBER:** 1380087-89-7**APPEARANCE:** White Solid**SOLUBILITY:** DMSO (>3 mg/ml)**PURITY:** ≥98% by HPLC**STORAGE:** Store at -20°C. Protect from air and light.**DESCRIPTION:** CPI-0610 is a potent, selective BET (bromodomain and extra terminal family of proteins) inhibitor and inhibits BRD4-BD1 with IC₅₀ of 39 nM. It potentially demonstrates anti-neoplastic activity by binding acetylated lysine recognition motifs on the bromodomain of BET proteins, thus preventing the interaction of BET proteins and acetylated histone peptides.**REFERENCES:** Albrecht BK. *et.al.* (2016). *J Med Chem.* **59**,1330-1339.**HANDLING:** Do not take internally. Wear gloves and mask when handling the product! Avoid contact by all modes of exposure.**RELATED PRODUCTS:**

AMI-1 (Cat. No. 1943-5, 25)
 Aza-2'-deoxycytidine (Cat. No. 1754-10, 50)
 5- BIX01294 (Cat. No. 1678-5, 25)
 Bromodomain Inhibitor, (+)-JQ1 (Cat. No. 2070-1, 5)
 Bromosporine (Cat. No. 2652-1,5)
 CPI-203 (Cat. No. 9404-1,5)
 EPZ004777 (Cat. No. 2381-1, 5)
 EPZ-5676 (Cat. No. 2382-1, 5)
 EPZ-6438 (E7438) (Cat. No. 2383-1, 5)
 EPZ005687 (Cat. No. 2364-2, 10)
 EZSolution™ EPZ005687 (Cat. No. 2375-2)
 EZSolution™ GSK126 (Cat. No. 2366-1)
 3-Deazaneplanocin (Cat. No. 2060-250, 1000)
 GSK343 (Cat. No. 2281-1, 5)
 EZSolution™ GSK343 (Cat. No. 2365-1)
 EZSolution™ GSK126 (Cat. No. 2366-1)
 GSK126 (Cat. No. 2282-1, 5)
 (+)-JQ1 (Cat. No. 2070-1, 5)
 I-CBP112 (Cat. No. 9405-1, 5)
 EZSolution™ (+)-JQ1 (Cat. No. 2091-1)
 (-)-JQ1 (Cat. No. 2384-1)
 I-BET151 (Cat. No. 2220-1, 5)
 I-BET762 (Cat. No. 2628-1,5)
 Lomeguatrib (Cat. No. 2224-5, 25)
 MS436 (Cat. No. 2680-5, 25)
 OTX015 (Cat. No. 2651-1. 5)
 PFI-1 (Cat. No. 2203-1, 5)
 PFI-3 (Cat. No. 2895-5, 25)
 RG108 (Cat. No. 1679-10, 30)
 UNC0638 (Cat. No. 1933-1,
 Zebularine (Cat. No. 2225-1, 5)

USAGE: FOR RESEARCH CH USE ONLY! Not to be used in humans