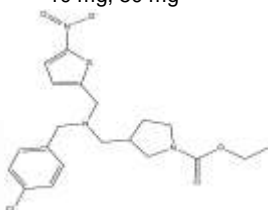


PRODUCT: SR9009**ALTERNATE NAME:** Ethyl 3-[[[(4-chlorophenyl) methyl][[(5-nitro-2-thienyl)methyl]amino]methyl]-1-pyrrolidinecarboxylate**CATALOG #:** B1210-10,50**AMOUNT:** 10 mg, 50 mg**STRUCTURE:****MOLECULAR FORMULA:** C₂₀H₂₄ClN₃O₄S**MOLECULAR WEIGHT:** 437.94**CAS NUMBER:** 1379686-30-2**APPEARANCE:** Off White Solid**SOLUBILITY:** DMSO (>40 mg/ml)**PURITY:** ≥98% by HPLC**STORAGE:** Store at -20°C. Protect from air and light.**DESCRIPTION:** SR9009 is a REV-ERB agonist that increases the constitutive repression of genes regulated by REV-ERB α (IC₅₀=670 nM) and REV-ERBβ (IC₅₀ = 800 nM). SR9009 decreases the circadian locomotor activity during dark phase through activation of REV-ERB, altering the expression pattern of core clock genes in the hypothalamai of mice. In *in vivo* experiments SR9009 has shown to decrease body fat and improved dyslipidemia and hyperglycemia.**REFERENCES:** Solt. L.A., *et.al.* (2012). *Nature* **485**, 62-68**HANDLING:** Do not take internally. Wear gloves and mask when handling the product! Avoid contact by all modes of exposure.**RELATED PRODUCTS:**GW-3965 hydrochloride (**9402**)SR9243 (**9642**)**USAGE:** **FOR RESEARCH CH USE ONLY! Not to be used in humans**