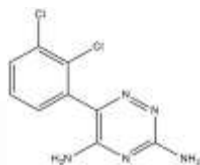


**PRODUCT: Lamotrigine****ALTERNATE NAME:** 6-(2,3-Dichlorophenyl)-1,2,4-triazine-3,5-diamine**CATALOG #:** B1234-10, 50**AMOUNT:** 10 mg, 50 mg**STRUCTURE:****MOLECULAR FORMULA:** C<sub>9</sub>H<sub>7</sub>Cl<sub>2</sub>N<sub>5</sub>**MOLECULAR WEIGHT:** 256.09**CAS NUMBER:** 84057-84-1**APPEARANCE:** White solid**SOLUBILITY:** DMSO (>25 mg/ml)**PURITY:** ≥98% by HPLC**STORAGE:** Store at -20°C. Protect from air and light.

**DESCRIPTION:** Lamotrigine is an inhibitor of voltage-gated sodium channels (Na<sub>v</sub>), blocking human Na<sub>v</sub>1.2, Na<sub>v</sub>1.5, and Na<sub>v</sub>1.8 with IC<sub>50</sub> values of 10, 62, and 96 μM, respectively. Also blocks heterologously expressed and native α4β2 nAChRs with a similar affinity to Na<sup>+</sup> channels. Lamotrigine acts as an anticonvulsant and has applications in many diseases that feature seizures, including epilepsy and autism spectrum disorder.

**REFERENCES:** Grunze, H., *et al.* (1998). *Neuropsychobiology* **38**, 131-138.

**HANDLING:** Do not take internally. Wear gloves and mask when handling the product! Avoid contact by all modes of exposure.

**RELATED PRODUCTS:**

Aconitine (Cat. No. 2423-10, 50)

Lamotrigine (Cat. No. B1234-10,50)

Mambalgin-1 (Cat. No. 2421-50, 100)

**USAGE:** *FOR RESEARCH CH USE ONLY! Not to be used in humans*