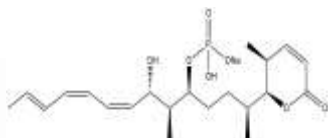


**PRODUCT: Cytostatin sodium**

**ALTERNATE NAME:** (5S)-5alpha-Methyl-6alpha-[(1S,4S,5S,6S,7Z,9Z,11E)-1,5-dimethyl-4-[(sodiooxy)phosphonyloxy]-6-hydroxy-7,9,11-tridecatrieny]-5,6-dihydro-2H-pyran-2-one

**CATALOG #:** B1240-250

**AMOUNT:** 250 µg

**STRUCTURE:**

**MOLECULAR FORMULA:** C<sub>21</sub>H<sub>32</sub>O<sub>7</sub>P • Na

**MOLECULAR WEIGHT:** 450.4

**CAS NUMBER:** 457070-06-3

**APPEARANCE:** Yellowish solid

**SOLUBILITY:** DMSO

**PURITY:** ≥75% by HPLC

**STORAGE:** Store at -20°C. Protect from air and light.

**DESCRIPTION:** Cytostatin is a potent and selective protein phosphatase 2A (PP2A) inhibitor. Cell adhesion inhibitor. Inhibits the adhesion of B16 melanoma cells to laminin and collagen type IV in a dose dependent manner but not to fibronectin. Acts as an antitumor and antimetastatic agent. Induces apoptosis.

**REFERENCES:** Kawada, M. *et al.* (2003). *Int. Immunopharmacol.* **3**,179 - 188

**HANDLING:** Do not take internally. Wear gloves and mask when handling the product! Avoid contact by all modes of exposure.

**RELATED PRODUCTS:**

AEBSF, HCl (**Cat. No. 1644-200, 1G**)

Aprotinin (**Cat. No. 4690-5, 100, 1000**)

BCA Protein Quantitation Kit (**Cat. No. K812-1000**)

Cytostatin sodium (**Cat. No. B1240-250**)

E-64 (**Cat. No. 1739-5, 25**)

EZBlock™ Phosphatase Inhibitor Cocktail III (**Cat. No. K276-1, set**)

EZBlock™ Phosphatase Inhibitor Cocktail IV (**Cat. No. K282-1, set**)

EZBlock™ Phosphatase Inhibitor Cocktail I (50X) (**Cat. No. K273-1, set**)

EZBlock™ Protease Inhibitor Cocktail II (**Cat. No. K277-set**)

EZBlock™ Protease Inhibitor Cocktail III (**Cat. No. K278-set**)

EZBlock™ Protease Inhibitor Cocktail IV (**Cat. No. K279-1, set**)

EZBlock™ Protease Inhibitor Cocktail EDTA-Free (**Cat. No. K272-1, 5, set**)

EZBlock™ Protease Inhibitor Cocktail V, EDTA-Free (**Cat. No. K290-1, set**)

EZBlock™ Protease Inhibitor Cocktail VI, General Use (**Cat. No. K291-1, set**)

EZBlock™ Protease Inhibitor Cocktail VII (**Cat. No. K292-1, set**)

EZBlock™ Protease Inhibitor Cocktail VIII (**Cat. No. K293-1, set**)

EZBlock™ Protease Inhibitor Cocktail IX (**Cat. No. K294-1, set**)

EZBlock™ Universal Protease and Phosphatase Inhibitor Cocktail (**Cat. No. K283-1, set**)

EZBlock™ Universal Protease and Phosphatase Inhibitor Cocktail, EDTA-Free (**Cat. No. K284-1, set**)

EZLys™ Bacterial Protein Extraction Reagent (**Cat. No. 8001-100, 500**)

EZLys™ Lysozyme, Human (**Cat. No. 8005-1G, 5G**)

Okadaic Acid (**Cat. No. 1543-025**)

Okadaic Acid, Ammonium Salt (**Cat. No. 1766-025**)

Okadaic Acid, Potassium Salt (**Cat. No. 1765-025**)

Okadaic Acid, Sodium Salt (**Cat. No. 1764-025**)

Leupeptin, Hemisulfate (**Cat. No. 1648-25, 50, 100**)

Pepstatin A (**Cat. No. 1732-25, 100**)

Protease Inhibitor Cocktail (**Cat. No. K271-500**)

PMSF (**Cat. No. 1548-5**)

Rubratoxin A (**Cat. No. B1239-250, 500**)

Tautomycin (**Cat. No. B1237-10, 50**)

**USAGE:** **FOR RESEARCH CH USE ONLY! Not to be used in humans**