

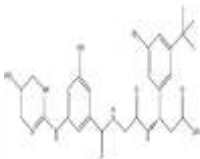
PRODUCT: CWHM-12

ALTERNATE NAME: (3S)-N-[3-hydroxy-5-[(1,4,5,6-tetrahydro-5-hydroxy-2-pyrimidinyl)amino]benzoyl]glycyl-3-[3-bromo-5-(1,1-dimethylethyl)phenyl]-β-alanine

CATALOG #: B1251-5,25

AMOUNT: 5 mg, 25 mg

STRUCTURE:



MOLECULAR FORMULA: C₂₆H₃₂BrN₅O₆

MOLECULAR WEIGHT: 590.47

CAS NUMBER: 1564286-55-0

APPEARANCE: White solid

SOLUBILITY: DMSO (>10 mg/ml)

PURITY: ≥98% by HPLC

STORAGE: Store at -20°C. Protect from air and light.

DESCRIPTION: CWHM-12 a potent small molecule inhibitor of αV integrins with IC₅₀s of 1.8/0.8/1.5/0.2 nM for αvβ1/αvβ3/αvβ8. It displays less potency on αvβ5 (IC₅₀ = 61 nM) and on inhibition on α11β3/α2β1/α10β1.

REFERENCES: Henderson, N.C., *et.al.* (2013). *Nat Med.* **19**, 1617-1624

HANDLING: Do not take internally. Wear gloves and mask when handling the product! Avoid contact by all modes of exposure.

RELATED PRODUCTS:

Integrin ligand peptide (**1824**)

E-Cadherin (Human) ELISA Kit (**K4189**)

USAGE: **FOR RESEARCH CH USE ONLY! Not to be used in humans**