

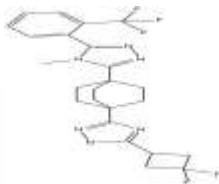
PRODUCT: MK-4101

ALTERNATE NAME: 5-(3,3-Difluorocyclobutyl)-3-[4-[4-methyl-5-[2-(trifluoromethyl)phenyl]-4H-1,2,4-triazol-3-yl]bicyclo[2.2.2]oct-1-yl]-1,2,4-oxadiazole

CATALOG #: B1255-5,25

AMOUNT: 5 mg, 25 mg

STRUCTURE:



MOLECULAR FORMULA: C₂₄H₂₄F₅N₅O

MOLECULAR WEIGHT: 493.48

CAS NUMBER: 935273-79-3

APPEARANCE: Crystalline solid

SOLUBILITY: DMSO

PURITY: ≥98% by HPLC

STORAGE: Store at -20°C. Protect from air and light.

DESCRIPTION: MK-4101 is a potent and selective inhibitor of the Hedgehog (Hh) signaling Pathway. It displays potent activity against medulloblastoma and Basal Cell Carcinoma (BCC). MK-4101 shows anti-tumor activity through the inhibition of proliferation and induction of extensive apoptosis in tumor cells.

REFERENCES: Filocamo, G., *et al.* (2016). *Mol. Cancer Ther.* **15**, 1177-1189.

HANDLING: Do not take internally. Wear gloves and mask when handling the product! Avoid contact by all modes of exposure.

RELATED PRODUCTS:

BODIPY-Cyclopamine (Cat. No. 2160-50, 250)

CUR-61414 (Cat. No. 2743-5, 25)

Cyclopamine (Cat. No. 1578-5)

EZSolution™ Cyclopamine (Cat. No. 2545-5)

Cyclopamine-KAAD (Cat. No. 1910-50)

GANT58 (Cat. No. 1812-5, 25)

GANT61 (Cat. No. 1892-5)

GDC-0449 (Cat. No. 1890-5, 25)

EZSolution™ GDC-0449 (Cat. No. 2539-5)

Hh Signaling Pathway Antagonist (Cat. No. 1659-1)

DiscoveryPak™ hedgehog Signaling Pathway Antagonists Set (Cat. No. K868-6)

HPI-1 (Cat. No. 2410-5, 25)

Itraconazole (Cat. No. 1987-50, 100, 500, 1000)

Jervine (Cat. No. 2357-1, 5)

JK-184 (Cat. No. 1726-1)

LDE-225 (Cat. No. 2892-5, 25)

LDE-225 diphosphate (Cat. No. 2893-5,25)

Purmorphamine (Cat. No. 1672-5)

Robotnikinin (Cat. No. 1923-1)

SANT-1 (Cat. No. 1978-1,5)

SANT-2 (Cat. No. 1976-1, 5)

Smo Antagonist, SA1 (Cat. No. 2154)

Smo Antagonist, SA9 (Cat. No. 2155)

Smo Antagonist, SA10 (Cat. No. 2159)

Sonic Hedgehog, human recombinant (Cat. No. 4010-25, 100, 1000)

Sonic Hedgehog, murine recombinant (Cat. No. 4020-25, 100, 1000)

Tomatidine hydrochloride (Cat. No. 1893-25)

USAGE: **FOR RESEARCH CH USE ONLY! Not to be used in humans**