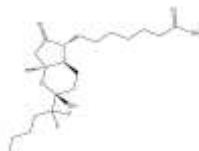


**PRODUCT: Lubiprostone****ALTERNATE NAME:** (11a,15R)-11,15-Epoxy-16,16-difluoro-15-hydroxy-9-oxo-prostan-1-oic acid, Ru 0211, Spi 0211**CATALOG #:** B1319-1, 5**AMOUNT:** 1 mg, 5 mg**STRUCTURE:****MOLECULAR FORMULA:** C<sub>20</sub>H<sub>32</sub>F<sub>2</sub>O<sub>5</sub>**MOLECULAR WEIGHT:** 390.46**CAS NUMBER:** 136790-76-6**APPEARANCE:** White to off-white solid**SOLUBILITY:** DMSO (~20 mg/ml)**PURITY:** ≥98% by HPLC**STORAGE:** Store at -20°C. Protect from air and light.**DESCRIPTION:** Lubiprostone is a bicyclic fatty acid metabolite analog of Prostaglandin E1 that activates ClC-2 and CFTR chloride channels. It has been suggested that lubiprostone opens CFTR or both CFTR and ClC-2 through interactions with the prostaglandin receptor EP4.**REFERENCES:** Pare, P., *et al.* (2001). *Am. J. Gastroenterol.*, **96**, 3130**HANDLING:** Do not take internally. Wear gloves and mask when handling the product! Avoid contact by all modes of exposure.**RELATED PRODUCTS:**Bimatoprost (**B1318**)Lubiprostone (**B1319**)PF-04418948 (**B1168**)Prostaglandin E2 (**2268**)SW-033291 (**9584**)**USAGE:** **FOR RESEARCH USE ONLY! Not to be used in humans**