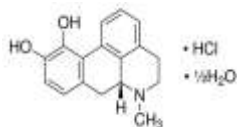


**PRODUCT: R (-)-Apomorphine Hydrochloride Hemihydrate****ALTERNATE NAME:** R-(-)-6a $\beta$ -aporphine-10,11-diol, hydrochloride; (R)-5,6,6a,7-Tetrahydro-6-methyl-4H-dibenzo[de,g]quinoline-10,11-diol, hydrochloride**CATALOG #:** B1541-50, 250**AMOUNT:** 50 mg, 250 mg**STRUCTURE:****MOLECULAR FORMULA:** C<sub>17</sub>H<sub>17</sub>NO<sub>2</sub> · HCl · 1/2H<sub>2</sub>O**MOLECULAR WEIGHT:** 312.79**CAS NUMBER:** 41372-20-7**APPEARANCE:** Grey solid**SOLUBILITY:** H<sub>2</sub>O (20 mg/ml)**PURITY:**  $\geq$ 98% by TLC**STORAGE:** Store at -20 °C. Protect from air and moisture**DESCRIPTION:** Apomorphine is an archetypical dopamine pan-receptor agonist. It displays anti-Parkinson's activity in vivo. Protects against MPTP-induced neurotoxicity in a mouse model. In clinical use for Parkinson's disease.**REFERENCES:** Auffret, M., *et al.* (2017). *J. Neurosci.* **372**, 279-287.**HANDLING:** Do not take internally. Wear gloves and mask when handling the product! Avoid contact by all modes of exposure.**RELATED PRODUCTS:**Entacapone (**B1190**)LRRK2 (Human) ELISA Kit (**K4228**)GSK2578215A (**2845**)PF-06447475 (**9447**)Protein Deglycase (DJ-1), Human Recombinant (**P1130**)**USAGE:** **FOR RESEARCH CH USE ONLY! Not to be used in humans**