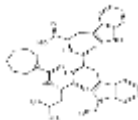


PRODUCT: BQ-610**ALTERNATE NAME:** AZEPANE-1-CARBONYL-LEU-D-TRP(FOR)-D-TRP-OH;
Hexahydroazepinocarbonyl-leu-D-trp(cho)-D-trp**CATALOG #:** B1553-1,5**AMOUNT:** 1 mg, 5 mg**STRUCTURE:****MOLECULAR FORMULA:** C₃₆H₄₄N₆O₆**MOLECULAR WEIGHT:** 656.79**CAS NUMBER:** 141595-53-1**APPEARANCE:** White lyophilized solid**SOLUBILITY:** H₂O (1 mg/ml)**PURITY:** ≥95% by HPLC**STORAGE:** Store at -20 °C. Protect from air and moisture**DESCRIPTION:** BQ-610 is a highly potent and selective ET_A (ET_A receptor) antagonist (IC₅₀ = 20 nM) that attenuates ET-induced reduction in cardiac output. It also inhibits ET-1- and ET-3-induced activation of adenylate cyclase (IC₅₀ = 28.2 nM). BQ-610 is 30-fold more potent ET_A antagonist than BQ-123 in pig aortic smooth muscle membrane assay, same activity as BQ-123 when tested on pig cerebellum membrane.**REFERENCES:** Illing, B., *et al.* (1996). *J. Cardiovasc. Pharmacol.* **27**, 487-494.**HANDLING:** Do not take internally. Wear gloves and mask when handling the product! Avoid contact by all modes of exposure.**RELATED PRODUCTS:**BQ-123 Sodium Salt (**B1552**)BQ-610 (**B1553**)BQ-788 (**B1554**)Endothelin-1 ELISA Kit (**K7429**)**USAGE:** **FOR RESEARCH USE ONLY! Not to be used in humans**