

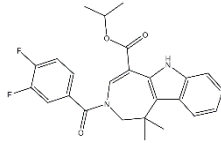
PRODUCT: WAY-362450

ALTERNATE NAMES: WAY 362450; WAY362450; XL-335; XL335; XL335; Turofexorate isopropyl; propan-2-yl 3-(3,4-difluorobenzoyl)-1,1-dimethyl-2,6-dihydroazepino[4,5-b]indole-5-carboxylate

CATALOG#: B1631-5, -25

AMOUNT: 5 mg, 25 mg

STRUCTURE:



MOLECULAR FORMULA: C₂₅H₂₄F₂N₂O₃

MOLECULAR WEIGHT: 438.47

CAS NUMBER: 629664-81-9

APPEARANCE: Solid powder

SOLUBILITY: DMSO

PURITY: >98%

STORAGE: Dry, dark and at 4°C for short term (days to weeks) or at -20°C for long term. Protect from air and light.

DESCRIPTION: WAY-362450 is a highly potent, selective, and orally active farnesoid X receptor (FXR) agonist with an EC₅₀ of 4 nM.

HANDLING: Do not take internally. Wear gloves and mask when handling the product! Avoid contact by all modes of exposure.

RELATED PRODUCTS:

- Chenodeoxycholic acid (Cat. No. 2831)
- Fexaramate (Cat. No. 9560)
- Fexaramine (B1156)
- GW-3965 hydrochloride (Cat. No. 9402)

USAGE: *FOR RESEARCH USE ONLY! Not to be used in humans*