

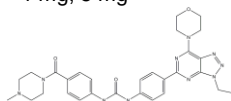
**PRODUCT: PKI-402**

**ALTERNATE NAMES:** PKI 402; PKI402; 1-[4-(3-ethyl-7-morpholin-4-yltriazolo[4,5-d]pyrimidin-5-yl)phenyl]-3-[4-(4-methylpiperazine-1-carbonyl)phenyl]urea

**CATALOG#:** B1715-1, -5

**AMOUNT:** 1 mg, 5 mg

**STRUCTURE:**



**MOLECULAR FORMULA:** C<sub>29</sub>H<sub>34</sub>N<sub>10</sub>O<sub>3</sub>

**MOLECULAR WEIGHT:** 570.65

**CAS NUMBER:** 173204-81-3

**APPEARANCE:** Solid powder

**SOLUBILITY:** DMSO

**PURITY:** >98%

**STORAGE:** Dry, dark and at 4°C for short term (days to weeks) or at -20°C for long term. Protect from air and light.

**DESCRIPTION:** PKI-402 is a reversible, potent dual inhibitor of PI3K/mTOR with IC<sub>50</sub> values of 2 nM/7 nM/16 nM/14 nM and 3 nM for PI3K $\alpha/\beta/\gamma/\delta$  and mTOR, respectively.

**HANDLING:** Do not take internally. Wear gloves and mask when handling the product! Avoid contact by all modes of exposure.

**REFERENCES:** 1. Mallon R et al. Antitumor efficacy profile of PKI-402, a dual phosphatidylinositol 3-kinase/mammalian target of rapamycin inhibitor. Mol Cancer Ther. 2010 Apr;9(4):976-84.

**RELATED PRODUCTS:**

- BEZ235 (NVP-BEZ235) (Cat. No. 1626-5, 25)
- BI-D1870 (Cat. No. 1824-1, 5)
- Deforolimus (Cat. No. 1587-5, 25)
- DiscoveryPak™ PI 3-Kinase Inhibitor Panel (Cat. No. K856-5)
- Everolimus (Cat. No. 1917-5, 25)
- GDC-0941 (Cat. No. 1623-1, 5)
- GSK-2126458 (Cat. No. 1961-1, 5)
- IC87114 (Cat. No. 1661-1)
- LY 294002 (Cat. No. 1667-5, 25)
- OSI-027 (Cat. No. 2372-5, 25)
- mTOR Inhibitor, Ku-0063794 (Cat. No. 1779-1, 5)
- mTOR Inhibitor, WYE-28 (Cat. No. 2255-500, 1000)
- mTOR Inhibitor, WYE-132 (Cat. No. 2256-500, 1000)
- mTOR Inhibitor, WYE-23 (Cat. No. 2257-500, 1000)
- PI-103 (Cat. No. 1728-1, 5)
- PI3-Ky Inhibitor, AS-605240 (Cat. No. 1780-1, 5)
- PathwayReady™ PI3-K/Akt/mTOR Signaling Inhibitor panel (Cat. No. K857-11)
- PP242 (Cat. No. 1658-1)
- P529 (Cat. No. 2462-5, 25)
- PX-866 (Cat. No. 1965-1, 5)
- Rapamycin (Cat. No. 1568-5, 50)
- EZSolution™ Rapamycin (Cat. No. 1746-5)
- Temsirolimus (Cat. No. 1600-5, 25)
- TGX-115 (Cat. No. 1660-1)
- TGX-221 (Cat. No. 1781-1, 5)
- Torin 1 (Cat. No. 2273-5, 25)
- Torin 2 (Cat. No. 2274-5, 25)
- EZSolution™ Torin 1 (Cat. No. 2353-5)
- EZSolution™ Torin 2 (Cat. No. 2354-5)
- Wortmannin (Cat. No. 1670)
- XL765 (Cat. No. 2551-5, 25)

**USAGE:** **FOR RESEARCH USE ONLY! Not to be used in humans**