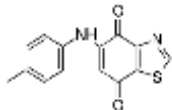


PRODUCT: Ryuvidine**ALTERNATE NAME:** 2-Methyl-5-[(4-methylphenyl)amino]-4,7-benzothiazolodione**CATALOG #:** B1808-1, 5**AMOUNT:** 1 mg, 5 mg**STRUCTURE:****MOLECULAR FORMULA:** C₁₅H₁₂N₂O₂S**MOLECULAR WEIGHT:** 284.33**CAS NUMBER:** 265312-55-8**APPEARANCE:** Dark purple solid**SOLUBILITY:** DMSO (~ 5 mg/ml)**PURITY:** ≥98%**STORAGE:** Store at -20 °C. Protect from air and light**DESCRIPTION:** Ryuvidine is a potent inhibitor of SET domain-containing protein 8 (SETD8) (IC₅₀ = 0.5 μM) that suppresses monomethylation of H4K20 *in vitro*. It displays weak inhibition against cyclin-dependent kinase 4 (Cdk4; IC₅₀ = 6 μM for Cdk4/cyclin D1). Induces S phase accumulation in HEK293T cells. Cytotoxic against a range of human cancer cells.**REFERENCES:** Ryu, C.K., *et al. Bioorg. Med. Chem. Lett.* **10**, 461-464**HANDLING:** Do not take internally. Wear gloves and mask when handling the product! Avoid contact by all modes of exposure.**RELATED PRODUCTS:**

A-366 (Cat. No. 2859-1, 5)

AMI-1 (Cat. No. 1943-5, 25)

Aza-2'-deoxycytidine (Cat. No. 1754-10, 50)

5- BIX01294 (Cat. No. 1678-5, 25)

Bromodomain Inhibitor, (+)-JQ1 (Cat. No. 2070-1, 5)

BRD4770 (Cat. No.9525-5, 25)

EZSolution™ (+)-JQ1 (Cat. No. 2091-1)

3-Deazaneplanocin (Cat. No. 2060-250, 1000)

2'-Deoxy-5-fluorocytidine (Cat. No. 2387-50, 250)

EPZ-015666 (Cat. No. 9510-1,5)

EPZ011989 (Cat. No. B1221-5,25)

Lomeguatrib (Cat. No. 2224-5, 25)

Nanaomycin A (Cat. No. 2790-5, 25)

RG108 (Cat. No. 1679-10, 30)

Ryuvidine (Cat. No. B1808-1,5)

SGI-1027 (Cat. No. 2726-5, 25)

UNC0638 (Cat. No. 1933-1, 5)

UNC0642 (Cat. No. 2862-5, 25)

Zebularine (Cat. No. 2225-1, 5)

USAGE: **FOR RESEARCH USE ONLY! Not to be used in humans**