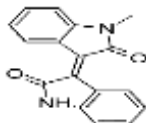


**PRODUCT: Meisoindigo****ALTERNATE NAME:** (E)-1,1'-dimethyl-[3,3'-biindolinylidene]-2,2'-dione; Methyl isoindigotin; N-Methylisoindigotin; Meisoindigo; Dian III**CATALOG NUMBER:** B1822-5,25**AMOUNT:** 5 mg, 25 mg**STRUCTURE:****MOLECULAR FORMULA:** C<sub>17</sub>H<sub>12</sub>N<sub>2</sub>O<sub>2</sub>**MOLECULAR WEIGHT:** 276.29**CAS NUMBER:** 97207-47-1**APPEARANCE:** Crystalline solid**SOLUBILITY:** DMSO**PURITY:** ≥98% by HPLC**STORAGE:** Store at -20 °C. Protect from air and light**DESCRIPTION:** Meisoindigo is a synthetic derivative of indirubin that acts as a potential agent for acute myeloid leukemia. In the in vitro assay, it can inhibit synthesis of DNA and RNA and the assembly of microtubules. It is also reported to have efficacy in acute myeloid leukemia. In the AML cell lines, HL-60, NB4 and U937, meisoindigo induces apoptosis in both caspase-dependent and -independent pathways.**REFERENCES:** Huang, M., *et al.* (2014). *Int. J. Oncol.* **45**, 1724-1734.**HANDLING:** Do not take internally. Wear gloves and mask when handling the product! Avoid contact by all modes of exposure.**RELATED PRODUCTS:**

Betulinic Acid (**Cat. No. 1552-25**)  
 Bexarotene (**Cat. No. 1575-5, 50**)  
 Capecitabine (Cat. No. 1741-100, 1000)  
 Carboplatin (**Cat. No. 1553-100**)  
 Cisplatin (**Cat. No. 1550-100,1000**)  
 Colchicine (**Cat. No. 1519-1000**)  
 Daunorubicin.HCl (**1524-10,50,500**)  
 Docetaxel (**Cat. No. 2232-10, 50**)  
 Doxorubicin HCl (**Cat. No. 1527-5**)  
 (-)-Epigallocatechin gallate (**Cat. No. 1841-50**)  
 Epothilone B (**Cat. No. 2012-1, 5**)  
 Fludarabine Phosphate (**Cat. No. 1763-10, 50**)  
 Gemcitabine Hydrochloride (**Cat. No. 1759-25, 100**)  
 Genistein (**Cat. No. 1533-10**)  
 Lasalocid Sodium (**Cat. No. B1587-5,25**)  
 Ilimaquinone (**Cat. No. 2038-100**)  
 Nedaplatin (**Cat. No. 1576-5**)  
 Nocodazole (**Cat. No. 2185-10, 50**)  
 Oxaliplatin (**Cat. No. 1577-25**)  
 Piperlongumine (**Cat. No. 1919-10, 50**)  
 Paclitaxel (**Cat. No. 1567-25**)  
 Solamargine (**Cat. No. B1586-5,25**)  
 Tamoxifen Citrate (**Cat. No. 1551-1000**)  
 Vinorelbine Tartrate (**Cat. No. 1957-5, 25**)

**USAGE:** **FOR RESEARCH USE ONLY! Not to be used in humans**