

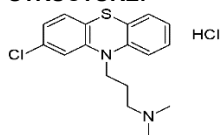
PRODUCT: Chlorpromazine hydrochloride

ALTERNATE NAMES: 2-Chloro-N,N-dimethyl-10H-phenothiazine-10-propanamine, monohydrochloride; CPZ; Thorazine; Promacid

CATALOG NUMBER: B1992-100, 500

AMOUNT: 100 mg, 500 mg

STRUCTURE:



MOLECULAR FORMULA: C₁₇H₁₉ClN₂S • HCl

MOLECULAR WEIGHT: 355.32

CAS NUMBER: 69-09-0

APPEARANCE: White to off-white solid

SOLUBILITY: DMSO (~ 30 mg/ml)

PURITY: ≥98%

STORAGE: Store at RT. Protect from air and moisture

DESCRIPTION: Chlorpromazine is a dopamine receptor antagonist; reduces neurotransmitter binding. Inhibits nitric oxide synthesis in mouse brain cytosol. Also acts as an antagonist of nAChR, histamine and 5-HT receptors. Displays growth-inhibitory effects on a variety of tumor cell lines. Exhibits antipsychotic activity. Inhibits MERS-CoV and SARS-CoV *in vitro*. It is reported to affect the assembly of clathrin-coated pits at the plasma membrane.

REFERENCES: Lepping, P., *et al.* (2011). *Br.J. Psychiatry* **198**, 341-345.

HANDLING: Do not take internally. Wear gloves and mask when handling

RELATED PRODUCTS:

Bromocriptine mesylate (**2916**)

Chlorpromazine hydrochloride (B1992)

Dopamine (DA) ELISA Kit (**K4219**)

SKF-38393 Hydrochloride (**9667**)

USAGE: **FOR RESEARCH USE ONLY! Not to be used in humans**