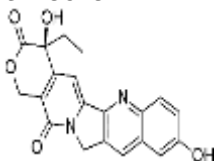


PRODUCT: 10-Hydroxycamptothecin

ALTERNATE NAMES: (S)-4-ethyl-4,9-dihydroxy-1H-pyrano[3',4':6,7]indolizino[1,2-b]quinoline-3,14(4H,12H)-dione; NSC107124

CATALOG NUMBER: B1995-25, 100

AMOUNT: 25 mg, 100 mg

STRUCTURE:

MOLECULAR FORMULA: C₂₀H₁₆N₂O₅

MOLECULAR WEIGHT: 364.35

CAS NUMBER: 19685-09-7

APPEARANCE: White solid

SOLUBILITY: DMSO (~ 3 mg/ml)

PURITY: ≥95% by HPLC

STORAGE: Store at -20 °C. Protect from air and light

DESCRIPTION: 10-Hydroxycamptothecin is a potent topoisomerase I inhibitor. It is a member of the camptothecin family that demonstrates less toxicity than its parent compound (Cat. No. 1039). 10-Hydroxycamptothecin displays strong anti-tumor activity against a wide range of experimental tumors including L1210 leukemia cells (IC₅₀ = 1.15 μM).

REFERENCES: Yu, P., et al. (2012). *Biological and Pharmaceutical Bulletin* **35**, 1295-1299.

HANDLING: Do not take internally. Wear gloves and mask when handling the product! Avoid contact by all modes of exposure.

RELATED PRODUCTS:

Betulinic Acid (Cat. No. 1552-25)
 Bexarotene (Cat. No. 1575-5, 50)
 Camptothecin (Cat. No. 1039-1, 50MG, 500MG)
 10-Hydroxycamptothecin (Cat. No. B1995-50, 250)
 Capecitabine (Cat. No. 1741-100, 1000)
 Carboplatin (Cat. No. 1553-100)
 Cisplatin (Cat. No. 1550-100,1000)
 Colchicine (Cat. No. 1519-1000)
 Daunorubicin.HCl (1524-10,50,500)
 Docetaxel (Cat. No. 2232-10, 50)
 Doxorubicin HCl (Cat. No. 1527-5)
 (-)-Epigallocatechin gallate (Cat. No. 1841-50)
 Epothilone B (Cat. No. 2012-1, 5)
 Fludarabine Phosphate (Cat. No. 1763-10, 50)
 Gemcitabine Hydrochloride (Cat. No. 1759-25, 100)
 Genistein (Cat. No. 1533-10)
 Lasalocid Sodium (Cat. No. B1587-5,25)
 Ilimaquinone (Cat. No. 2038-100)
 Nedaplatin (Cat. No. 1576-5)
 Nocodazole (Cat. No. 2185-10, 50)
 Oxaliplatin (Cat. No. 1577-25)
 Piperlongumine (Cat. No. 1919-10, 50)
 Paclitaxel (Cat. No. 1567-25)
 Solamargine (Cat. No. B1586-5,25)
 Tamoxifen Citrate (Cat. No. 1551-1000)
 Vinorelbine Tartrate (Cat. No. 1957-5, 25)

USAGE: **FOR RESEARCH USE ONLY! Not to be used in humans**