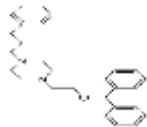


PRODUCT: GBR-12935**ALTERNATE NAMES:** 1-(2 (Diphenylmethoxy)ethyl)-4-(3-phenylpropyl)piperazine**CATALOG NUMBER:** B1998-10, 50**AMOUNT:** 10 mg, 50 mg**STRUCTURE:****MOLECULAR FORMULA:** C₂₈H₃₄N₂O**MOLECULAR WEIGHT:** 414.59**CAS NUMBER:** 76778-22-8**APPEARANCE:** Crystalline solid**SOLUBILITY:** DMSO**PURITY:** ≥98% by HPLC**STORAGE:** Store at -20 °C. Protect from air and light**DESCRIPTION:** GBR-12935 is a potent and selective dopamine reuptake inhibitor.**REFERENCES:** Reith, M.E., *et al.* (1994). *Eur.J. Pharmacol.* **253**, 175-178.**RELATED PRODUCTS:**Bromocriptine mesylate (**2916**)Chlorpromazine hydrochloride (**B1992**)Dopamine (DA) ELISA Kit (**K4219**)SKF-38393 Hydrochloride (**9667**)Thioridazine hydrochloride (**B1581**)Triflupromazine hydrochloride (**B1993**)**HANDLING:** Do not take internally. Wear gloves and mask when handling the product! Avoid contact by all modes of exposure.**USAGE:** **FOR RESEARCH USE ONLY! Not to be used in humans**